

APRICOT 2001

Fiber to the Building Solutions



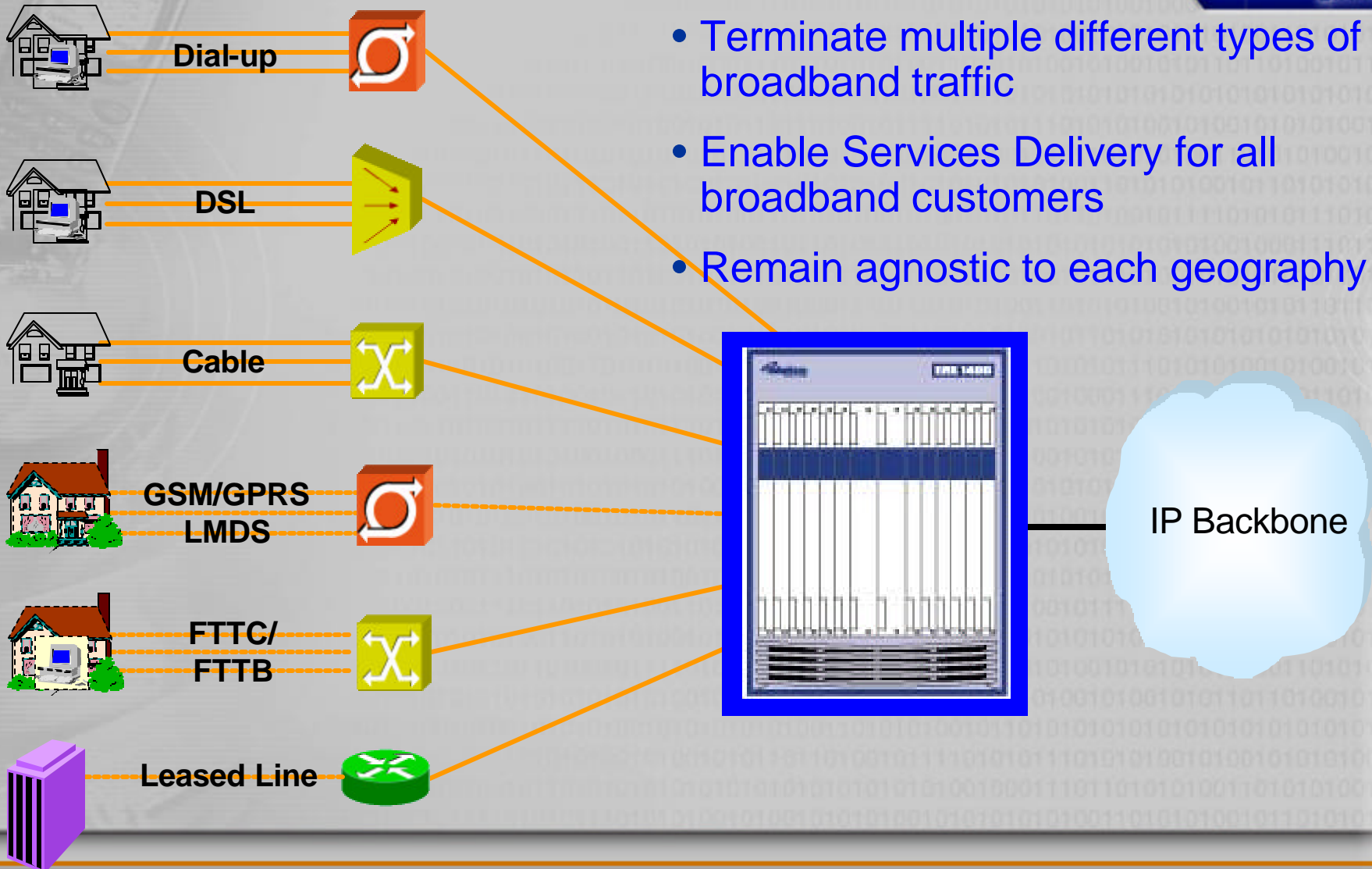
Unisphere
NETWORKS™

Scott Stevens
Director, Systems Engineering – Americas

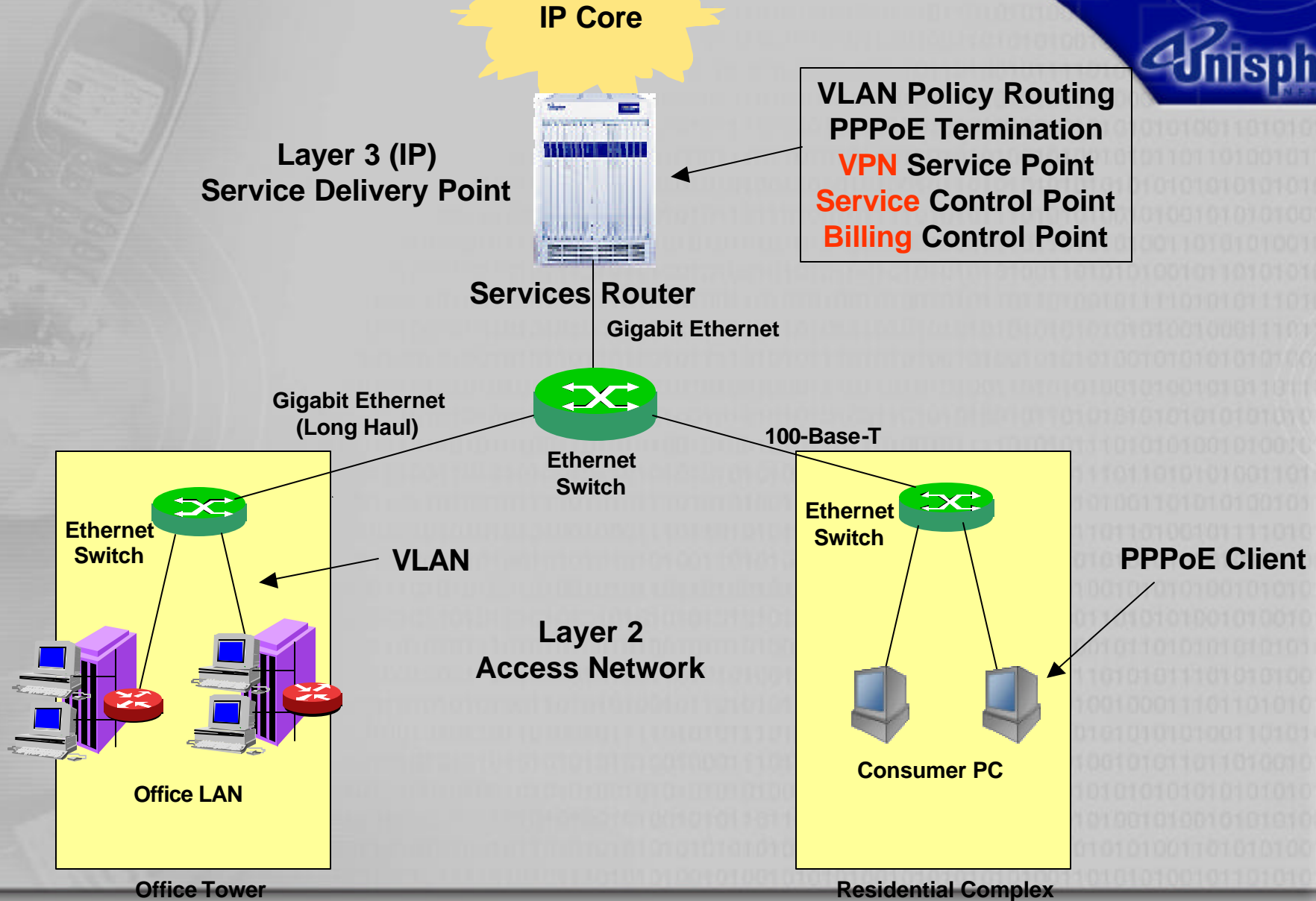
Agnostic Edge Aggregation

In one device:

- Terminate multiple different types of broadband traffic
- Enable Services Delivery for all broadband customers
- Remain agnostic to each geography



Fibre-to-the-building model

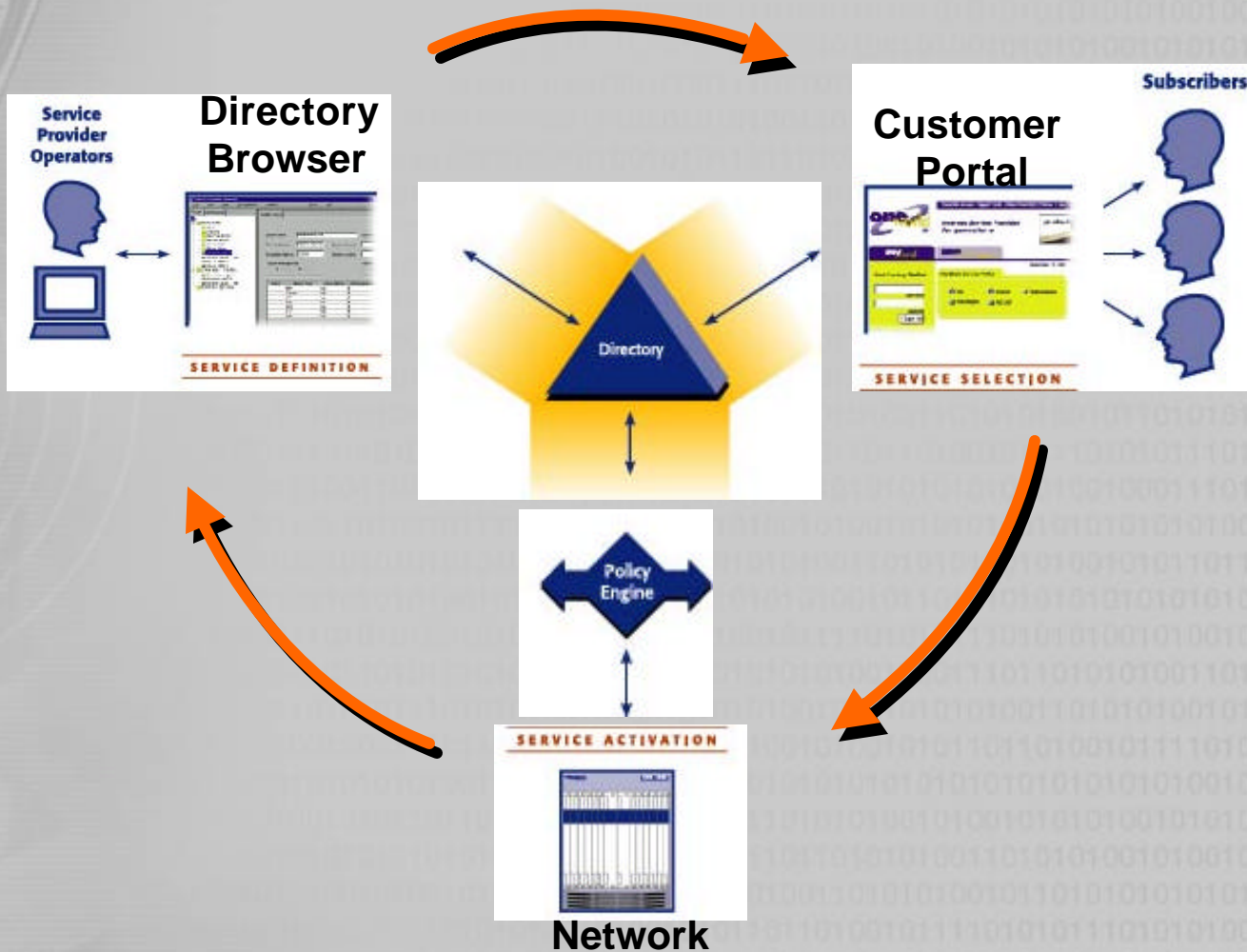


Subscriber Management = Customer Identity



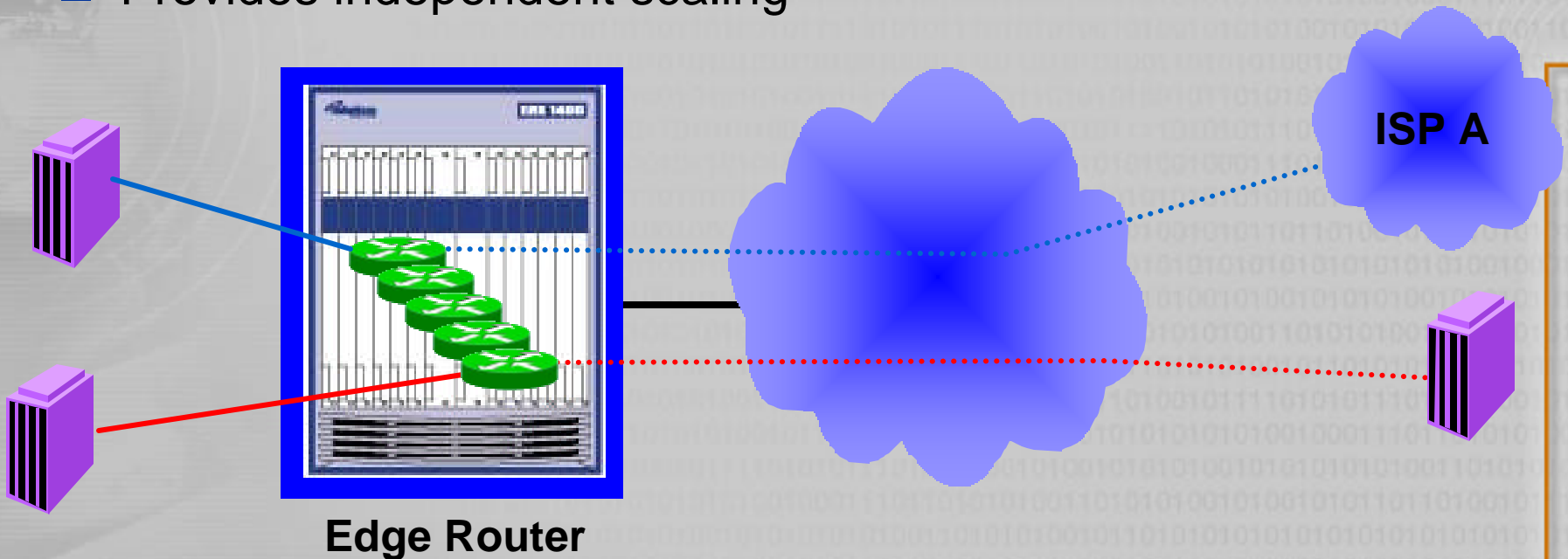
- Create a customer Identity
 - Map an initial Configuration to that Identity
 - Simplify and Speed Network Deployment for each Subscriber
- Map additional Services to that Identity
- ⇒ All requirements for Provisioning and Service Activation
- Maintain State with each Customer
 - Map profiles to active customers
 - Required for accurate Billing of services
 - Simplifies Statistics gathering and customer profiling

Fitting It All Together



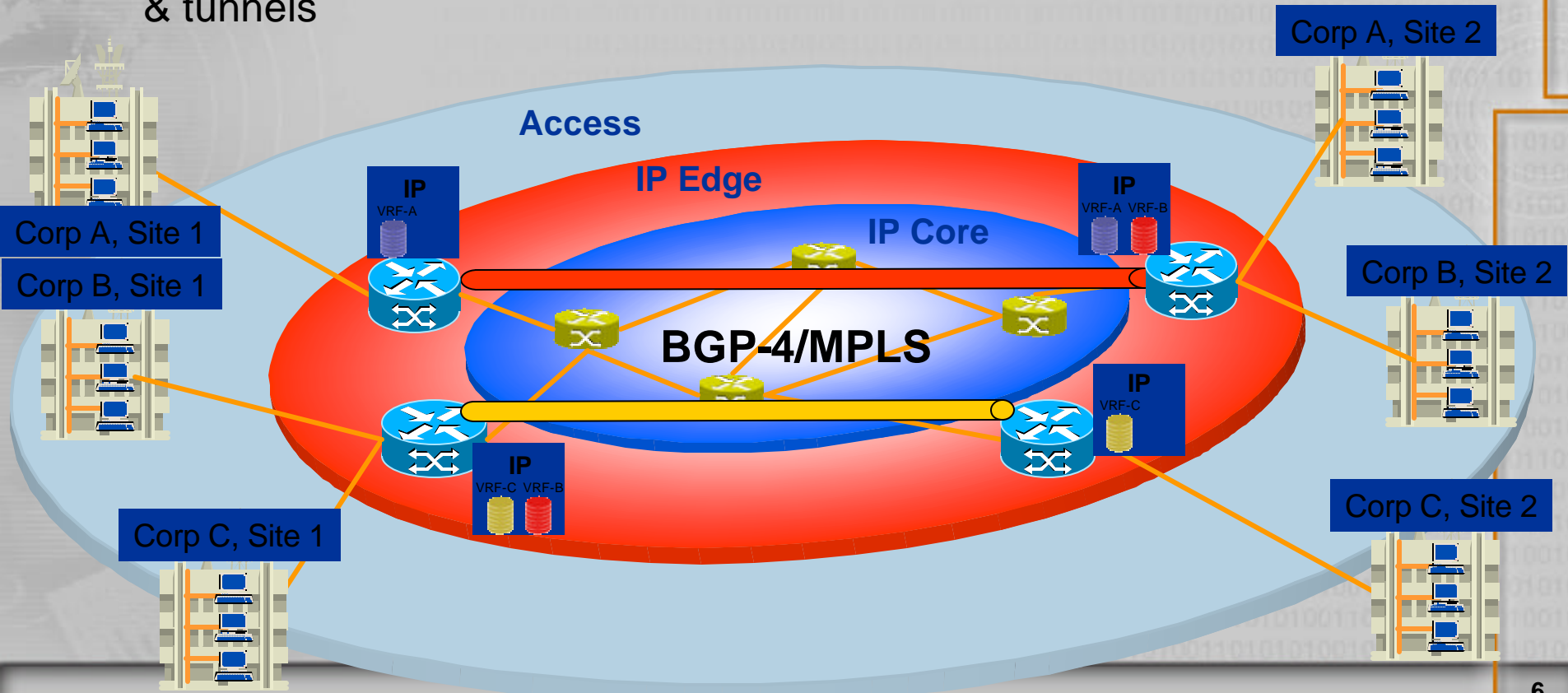
Virtual Routers

- Virtual router with dedicated forwarding table per VPN
 - Wholesaling, VPNs
- Enables overlapping address space
- Provides independent scaling



Site-to-Site IP VPNs

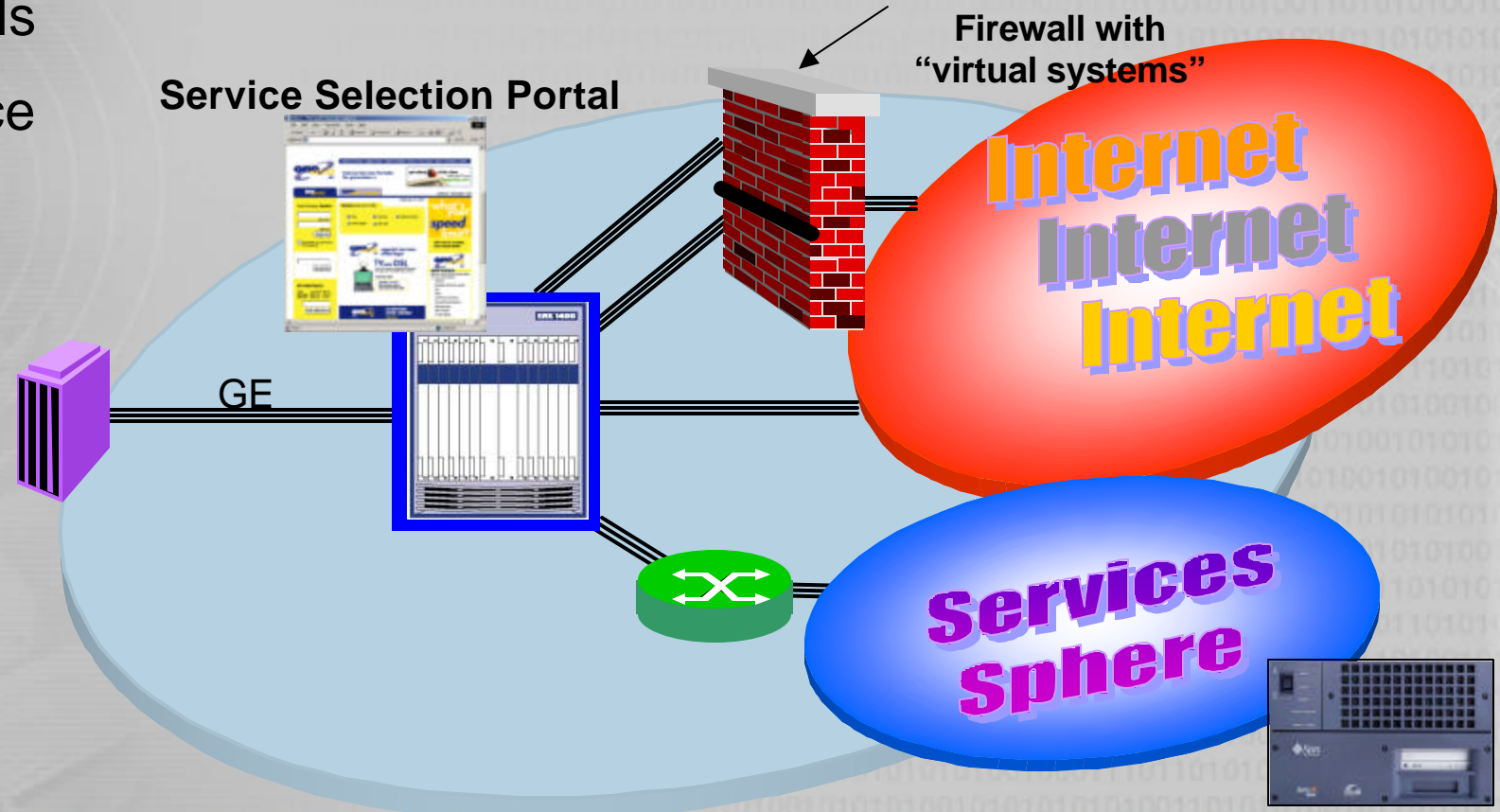
- Fully distributed throughout IP network
- IP services are applied at the ingress edge
- Sites 1 & 2 connect via MPLS & tunnels
- BGP extensions used to distributed VPN membership dynamically
- Subscriber service is “VPN”



Tiered Internet Services (more)

Differentiate with (policy) routing through value-added switches

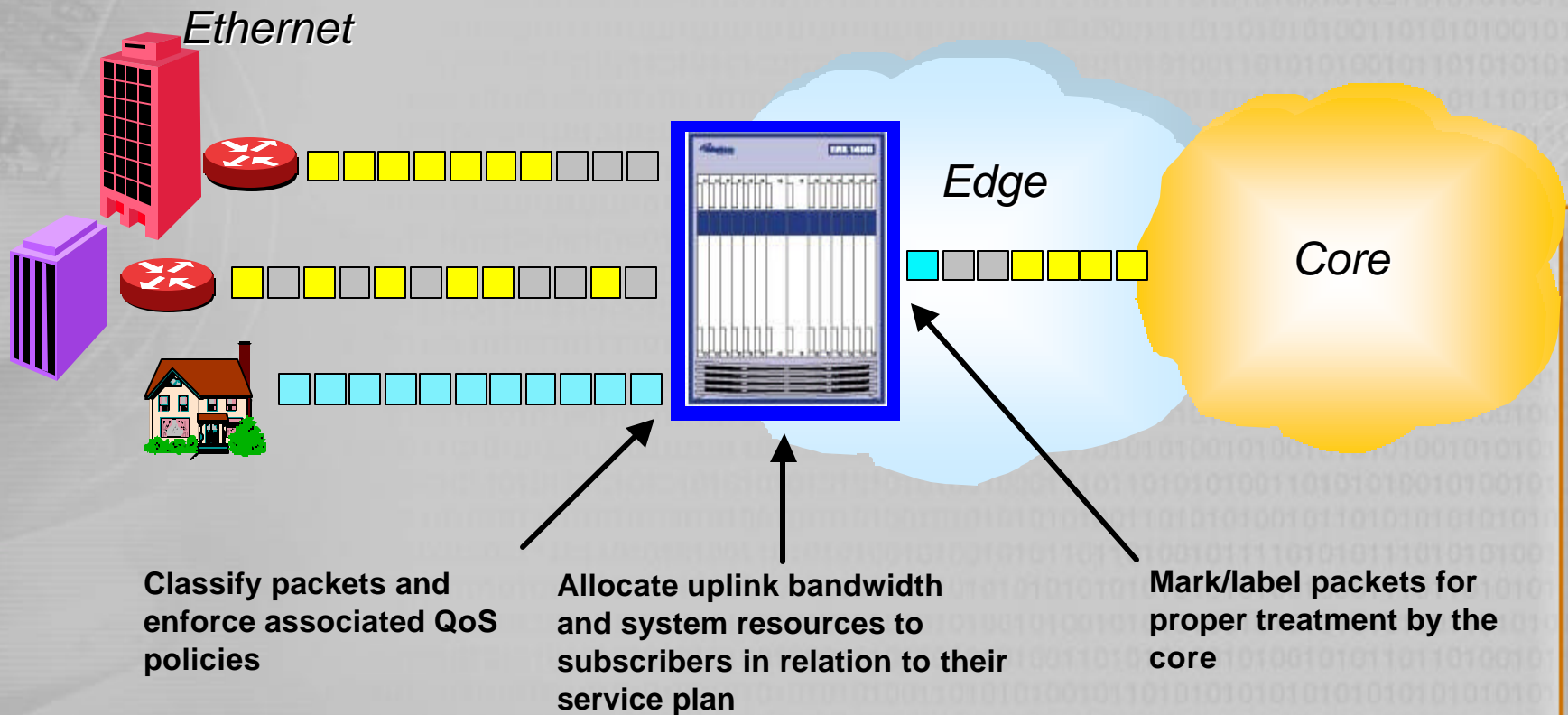
- Storage Area Networks
- VPNs
- Voice
- Firewalling (security)
- Web caching (better quality)



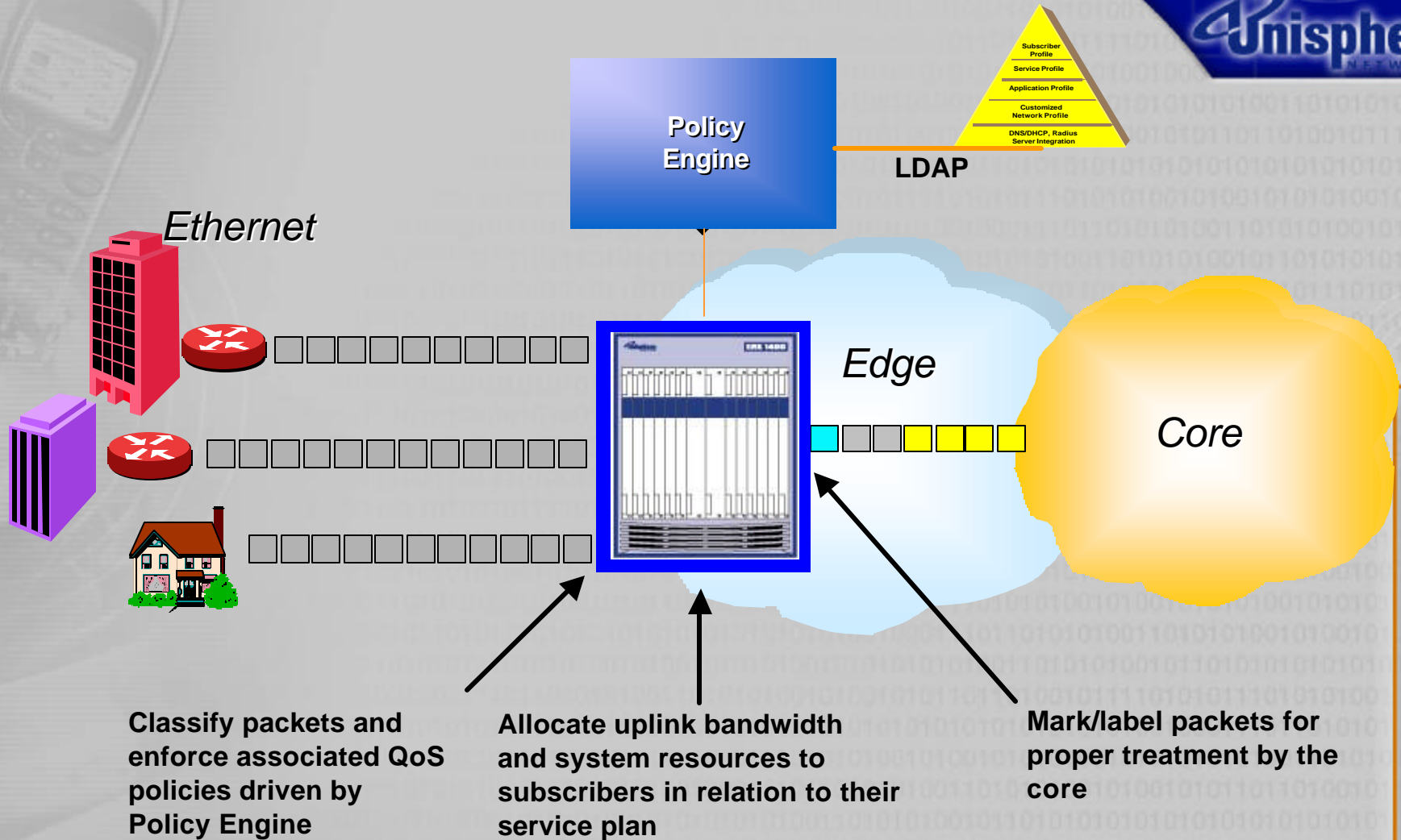
QoS Delivery – Customer Driven



The carrier edge aggregates and mediates QoS between thousands of subscribers at the entrance to the public network



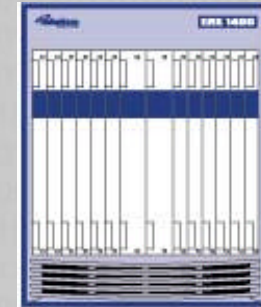
QoS Delivery – Directory Driven



Services Delivery Architecture for Broadband Networks

- Powerful Routing at the Edge of the provider network
- Network and Packet intelligence
- Granular Classification of Customer Traffic

“A Smart, Fast, Big-Iron Router”



- Intelligence of the Back Office
- Dynamic ability to modify the behavior of the network

“A Flexible, Scalable, Dynamic Policy Server”



Policy
Engine

Subscriber
Profile
Service Profile
Application Profile
Customized
Network Profile
DNS/DHCP, Radius
Server Integration