



Network Architectures

Services and Applications for Carrier IP Networks

David Drew
International Technical Director
CoSine Communications

Apricot 2001
www.cosinecom.com
February, 2000



Opportunity for IP Services

† Basic Connectivity

- † Limited revenue potential — “all you can eat” pricing
- † Internet access is a commodity

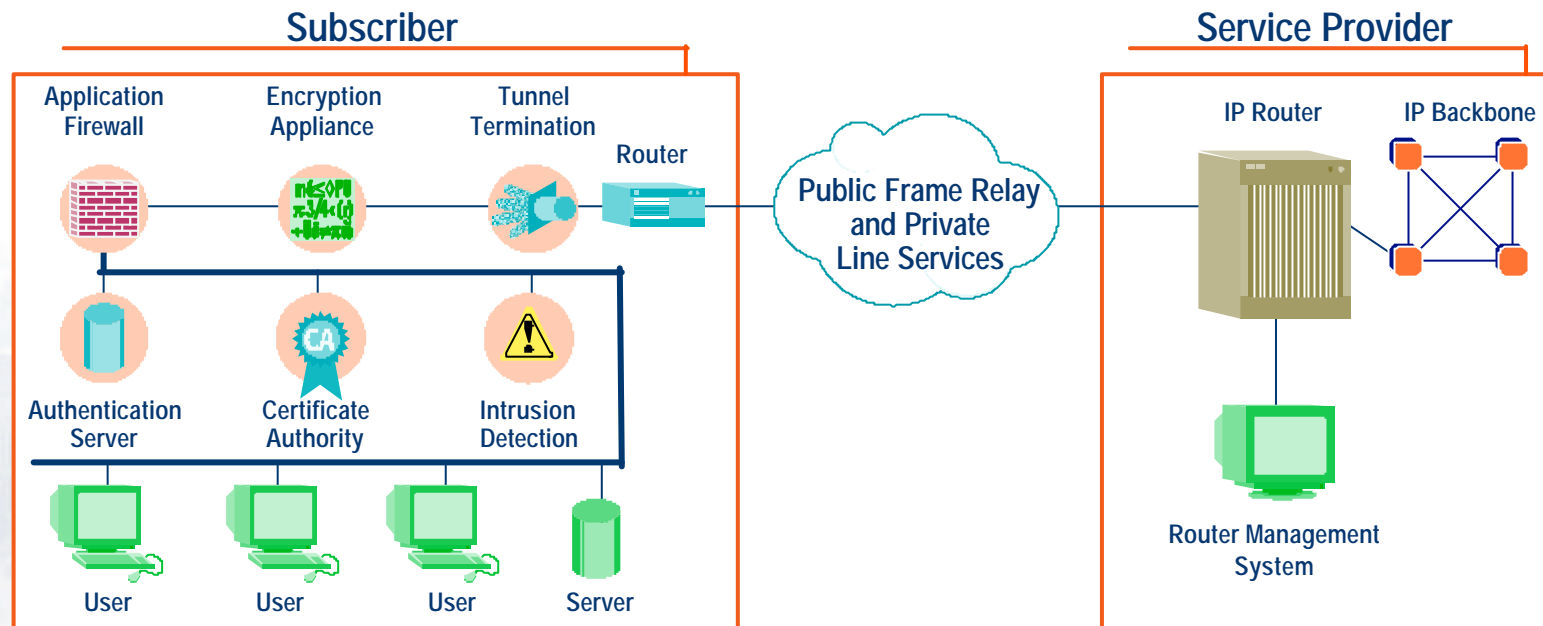
† Managed Customer Premises-based IP Services:

- † Lengthy time to market: Need for “truck roll” constrains profitability by delaying service turn-up
- † Revenue potential limited by high operational, management and maintenance costs
- † Lack of point product integration results in sluggish performance and dissatisfied subscribers

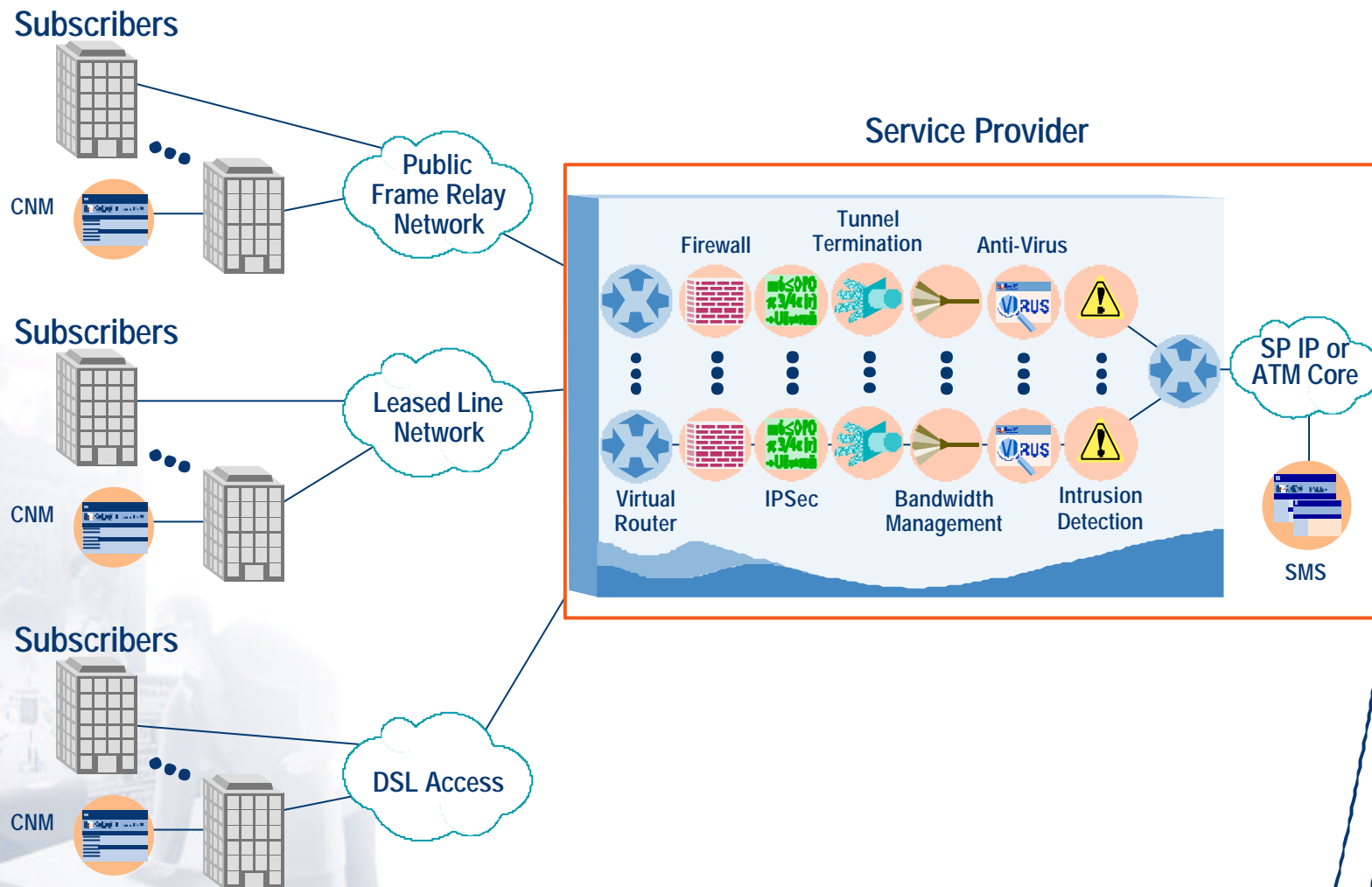
† Managed Network-based IP Services

- † Centralized service creation, delivery and management results in immediate turn-up and reduced operational costs
- † New revenue opportunities with customized service packages

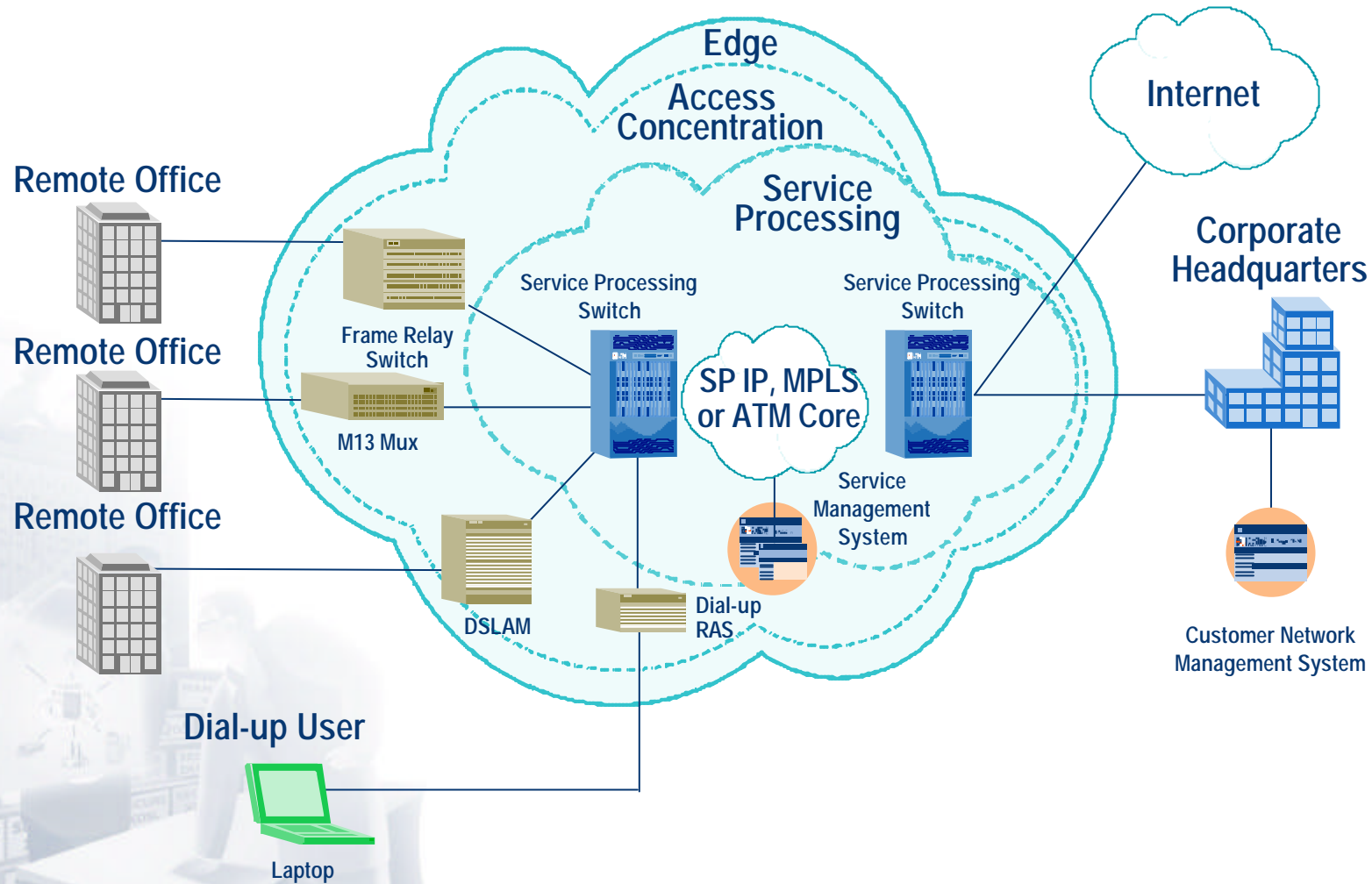
Current Customer Network



Network Based Service Delivery: Scalable IP Services Layered Over Basic Connectivity



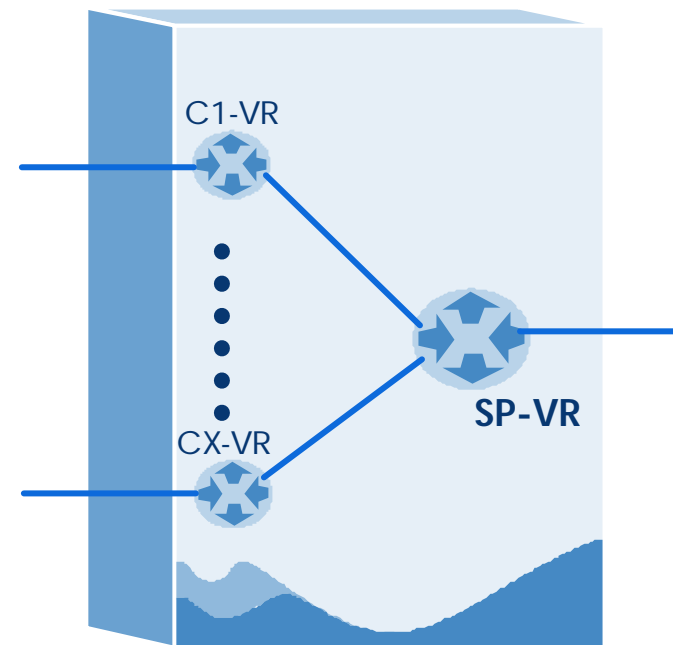
Where do Services fit into the Network?



Virtual Routing:

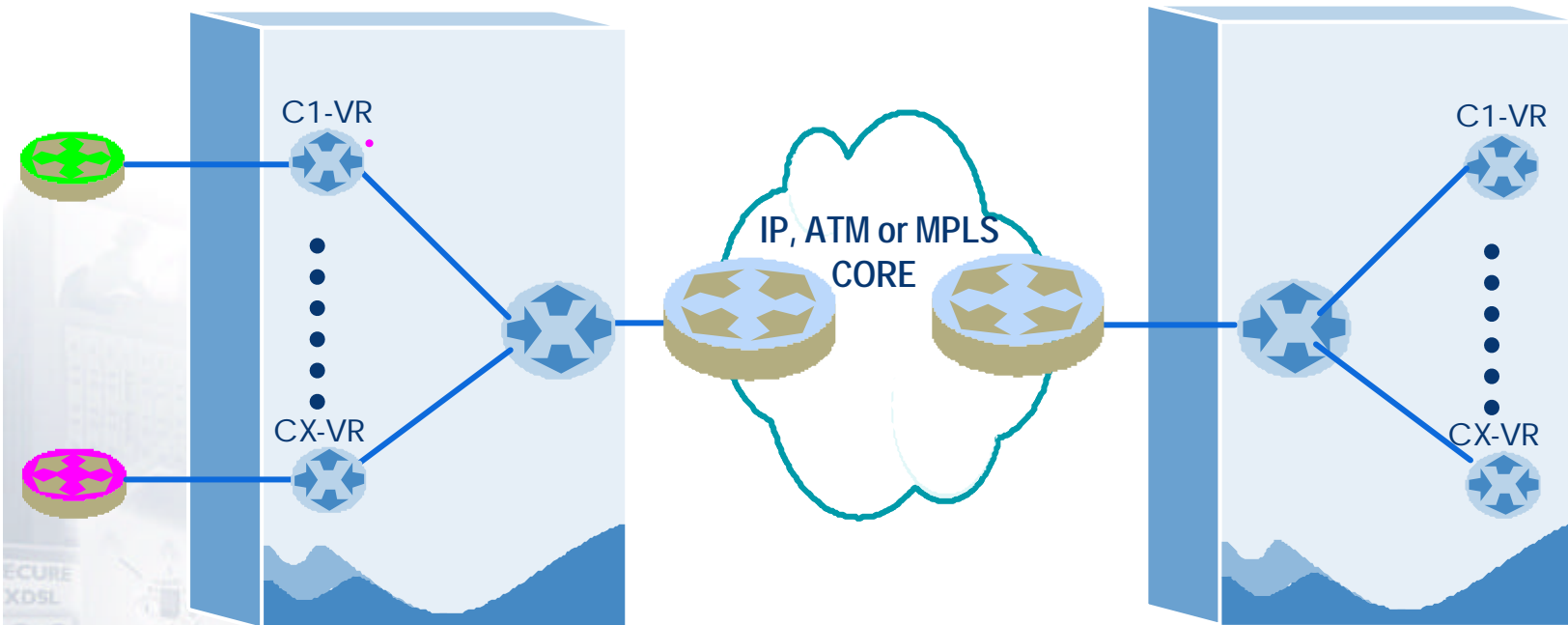
The building block for Value Added Services

- † Each VR acts is equivalent to an independent hardware router
- † Fully secured, no break-in capability e.g. Telnet
- † Routing Protocols;
 - † Static, RIP, OSPF, BGP4, ISIS
- † Services applied at the VR Level
- † Definable Servers per VR
 - † RADIUS
 - † Syslog
 - † DHCP



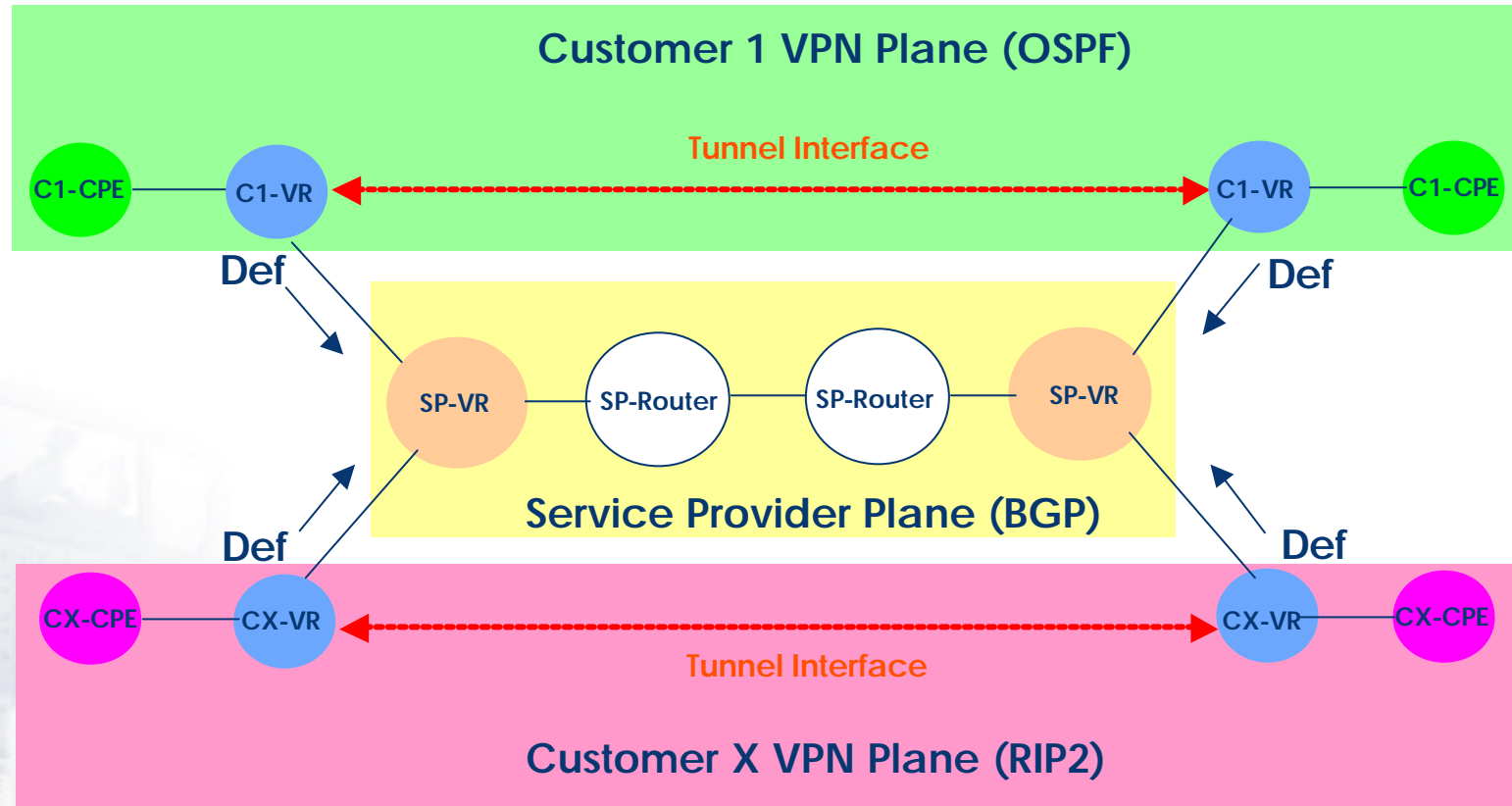
Virtual Routing (VR)

– Separation of Subscriber/Provider Routing



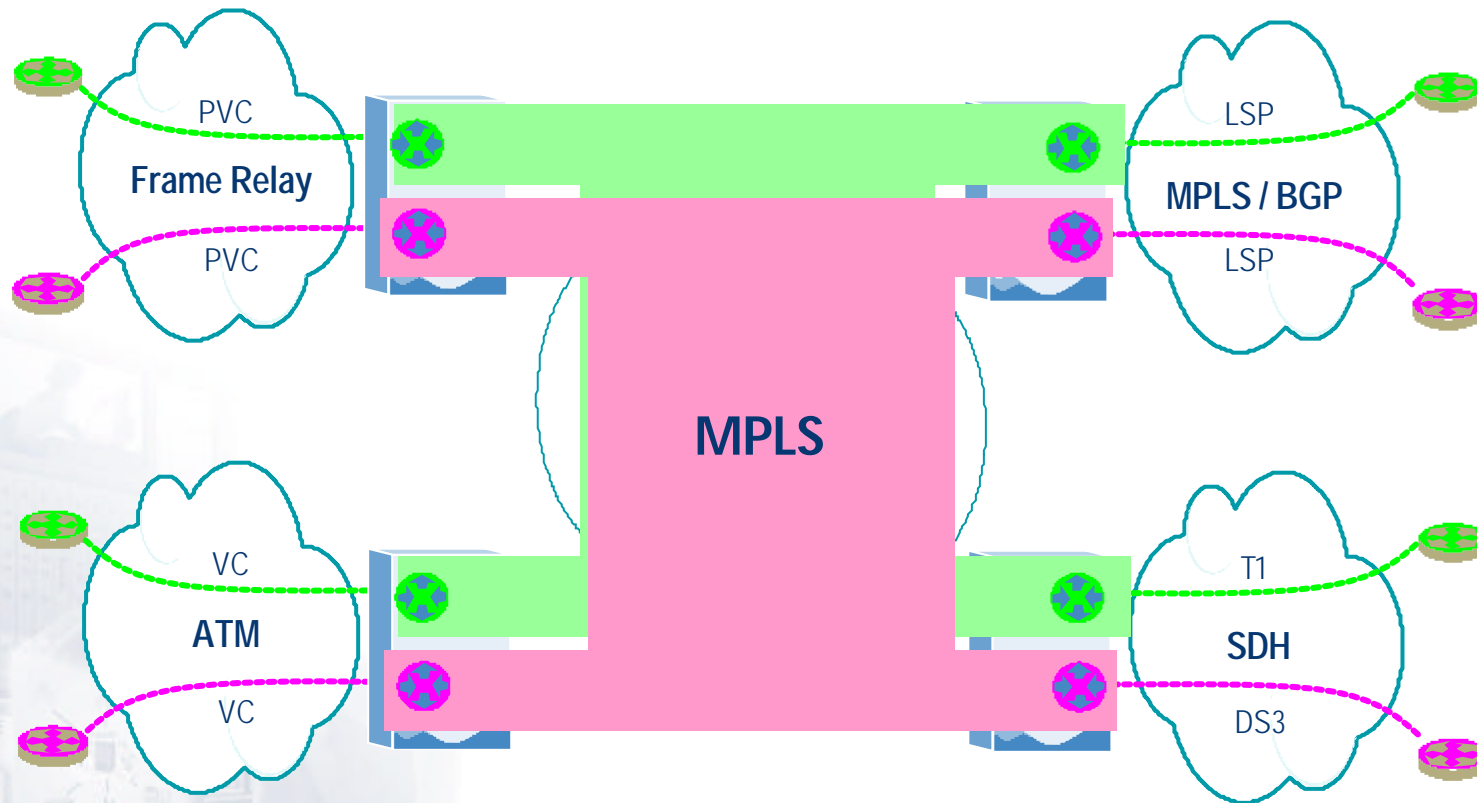
Virtual Routing (VR)

- Separation of Subscriber/Provider Routing

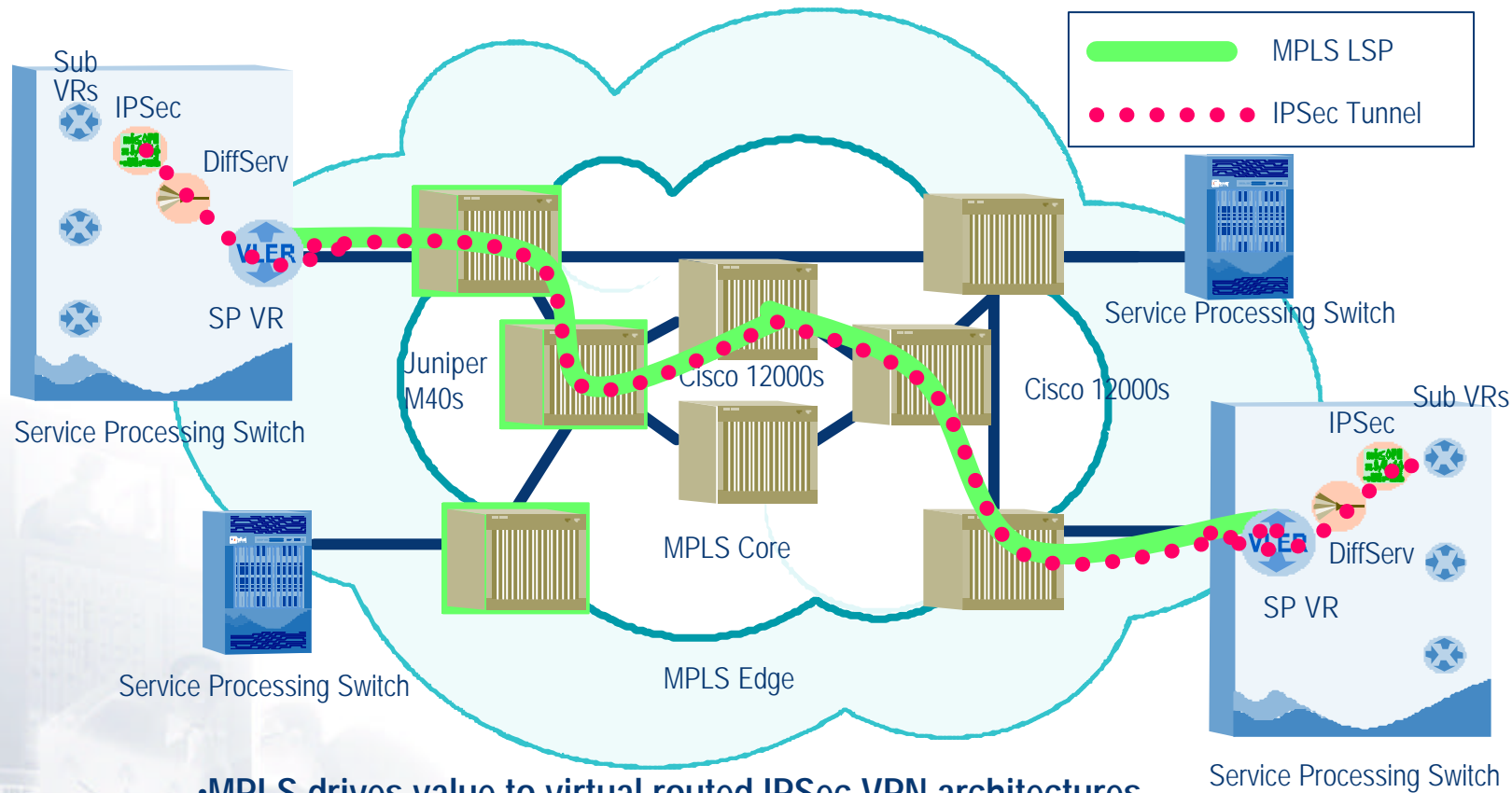


- Recursive layering of Routing schema's
- Complete isolation of Subscriber and Service Provider Route functions
- Increases scalability of VPN Routing solutions

Agnostic Access and Transport



MPLS TE Coupled with DiffServ



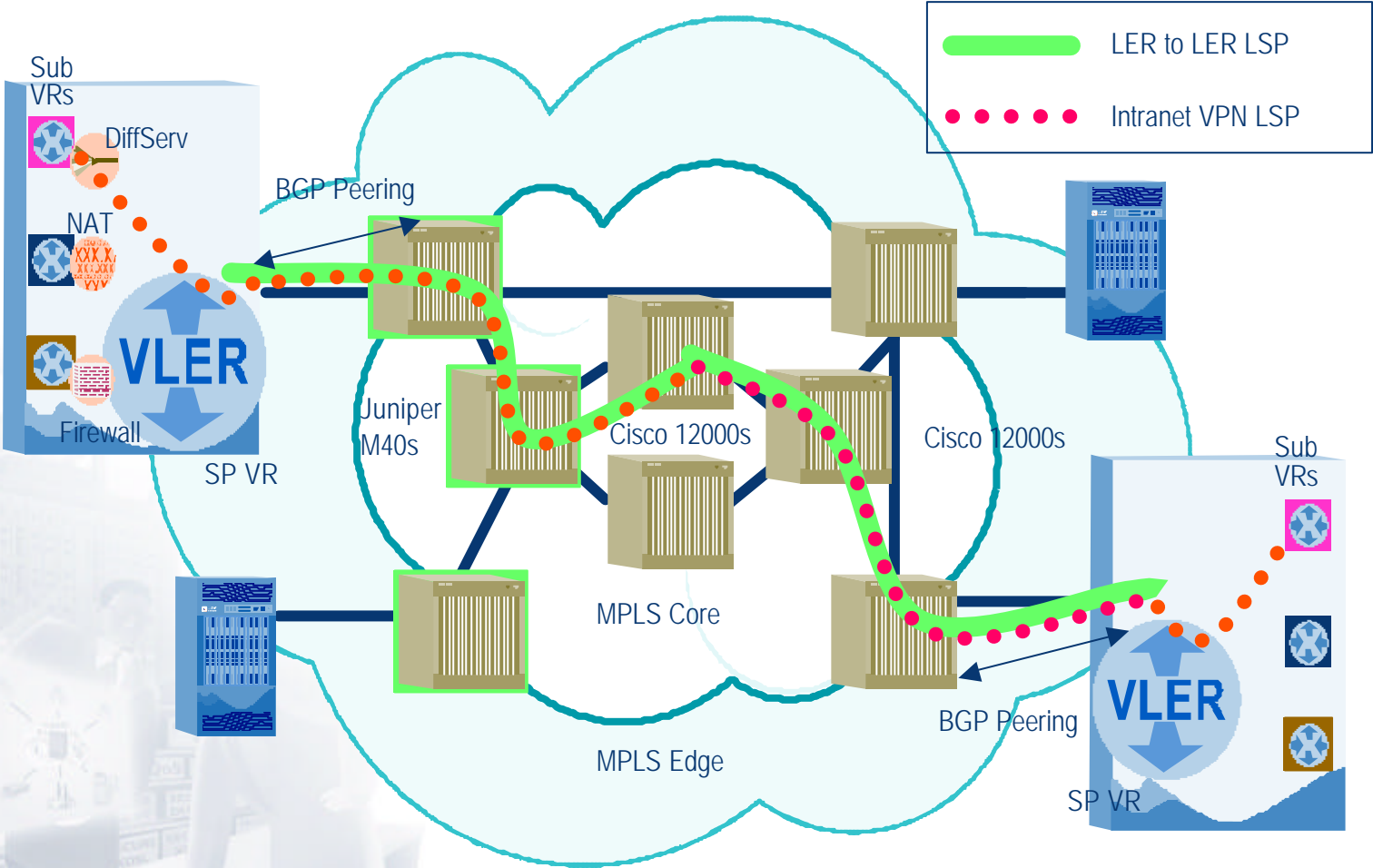
- MPLS drives value to virtual routed IPsec VPN architectures
- Secure intranet with ATM-like end-to-end performance level guarantees
- DiffServ mapped into MPLS LSPs enables application level performance parameters to be handled accordingly

IPsec tunnel generated at the Sub VR and mapped into LSPs at the SP VR

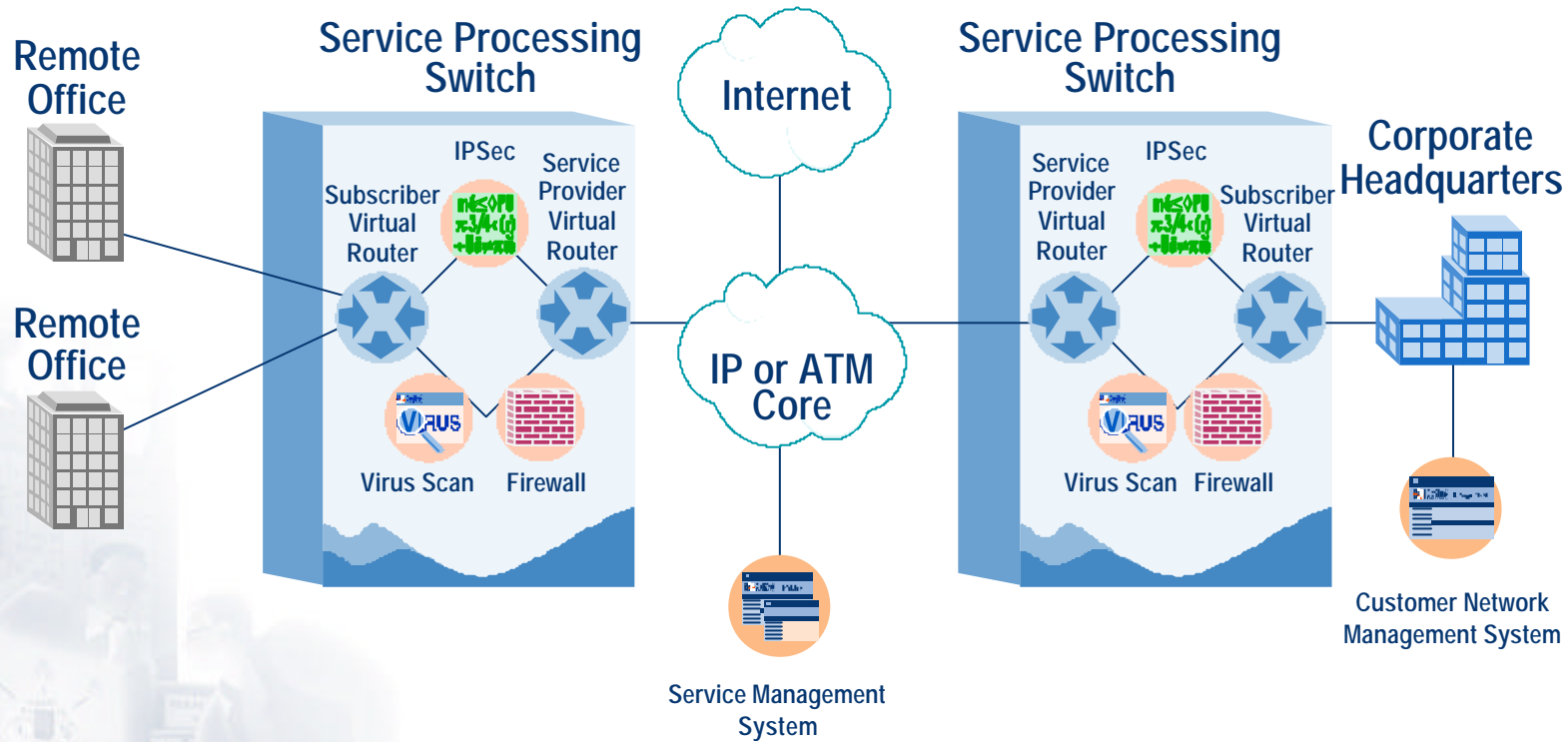
Apricot 2001

www.cosine.com
February, 2000

MPLS/BGP RFC 2547bis VPN's and Services



Firewall and Virus Application



Summary

- † Commoditization of Internet access drives down Service Provider margins
- † Managed services such as VPNs are a high growth, high revenue opportunity
- † Agnostic approach must be taken to any network design and implementation
- † Network-based service delivery enables scalable deployment of profitable services

