

# **IPv6 Activity in KR**

## **( Interoperability Verification Testing )**

**2011. 2. 27**

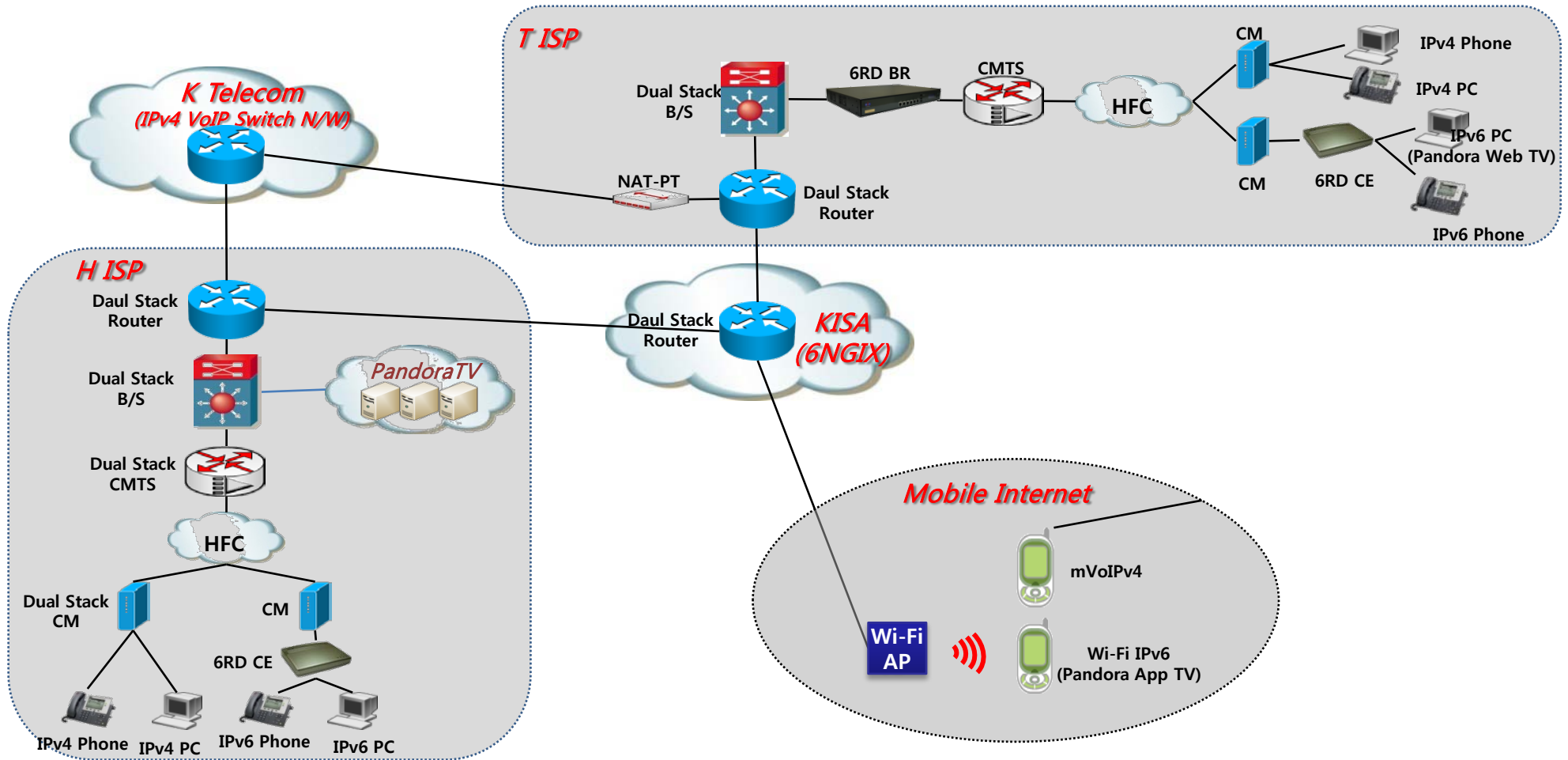
**NIR SIG @ APNIC 33**

**Jung-jung Na**

**KRNIC of KISA**

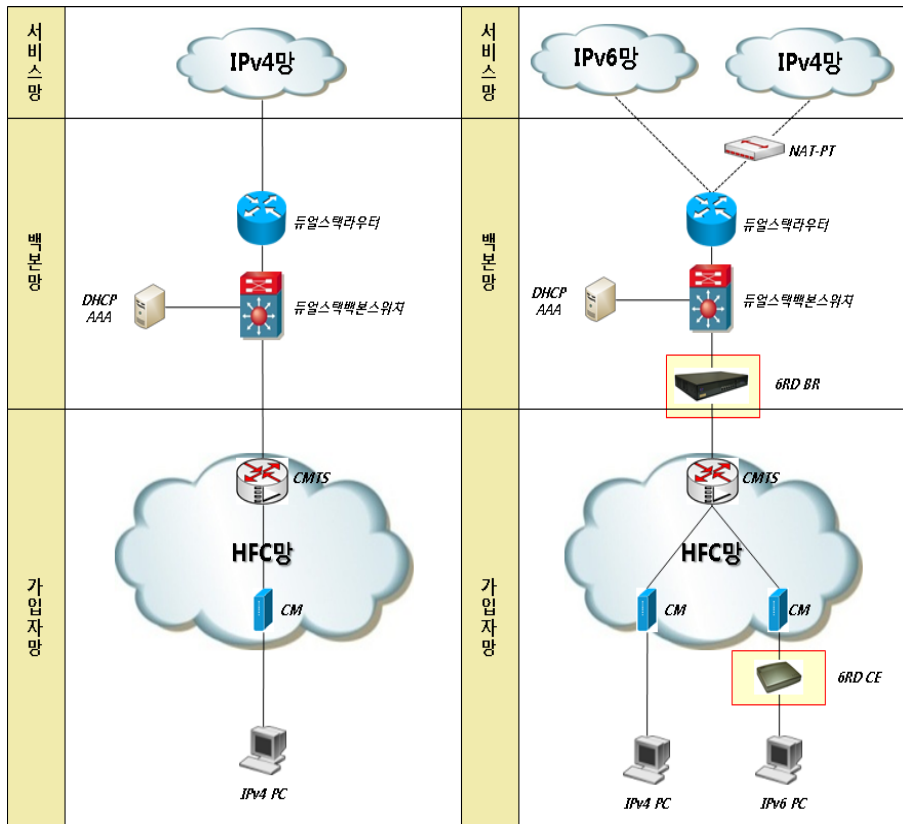
# I. Testing Environment

◆ KISA(6NGIX), T ISP(6RD), H ISP(Dual Stack), K Telco(VoIP Switch N/W), Mobile Internet



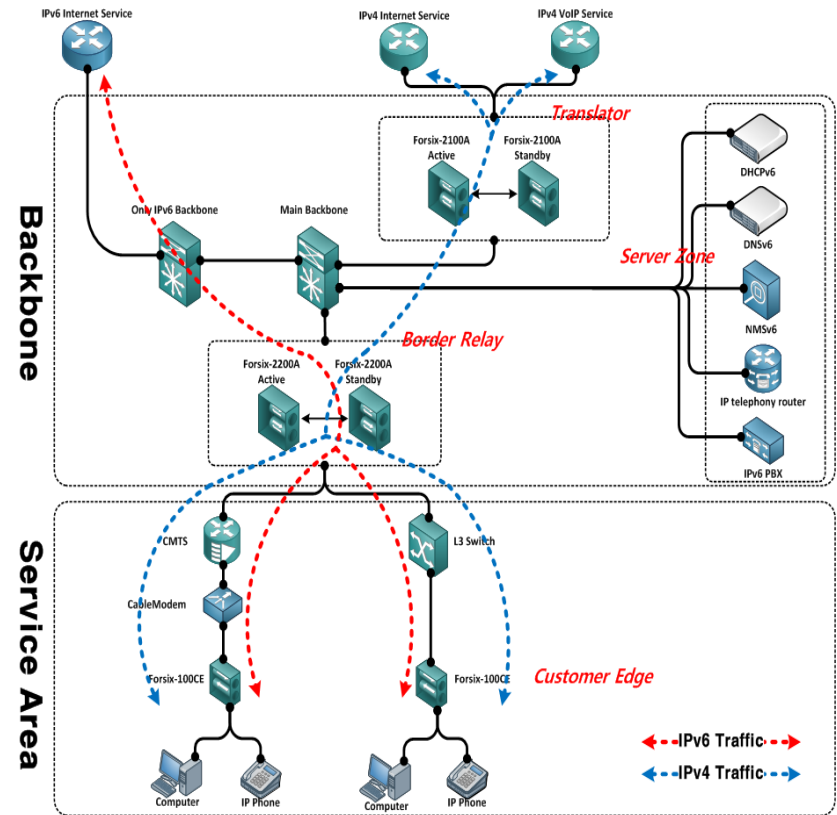
# I. Testing Environment – T ISP

## ◆ Deploying 6RD BR & CE



前(Before)

後(After)

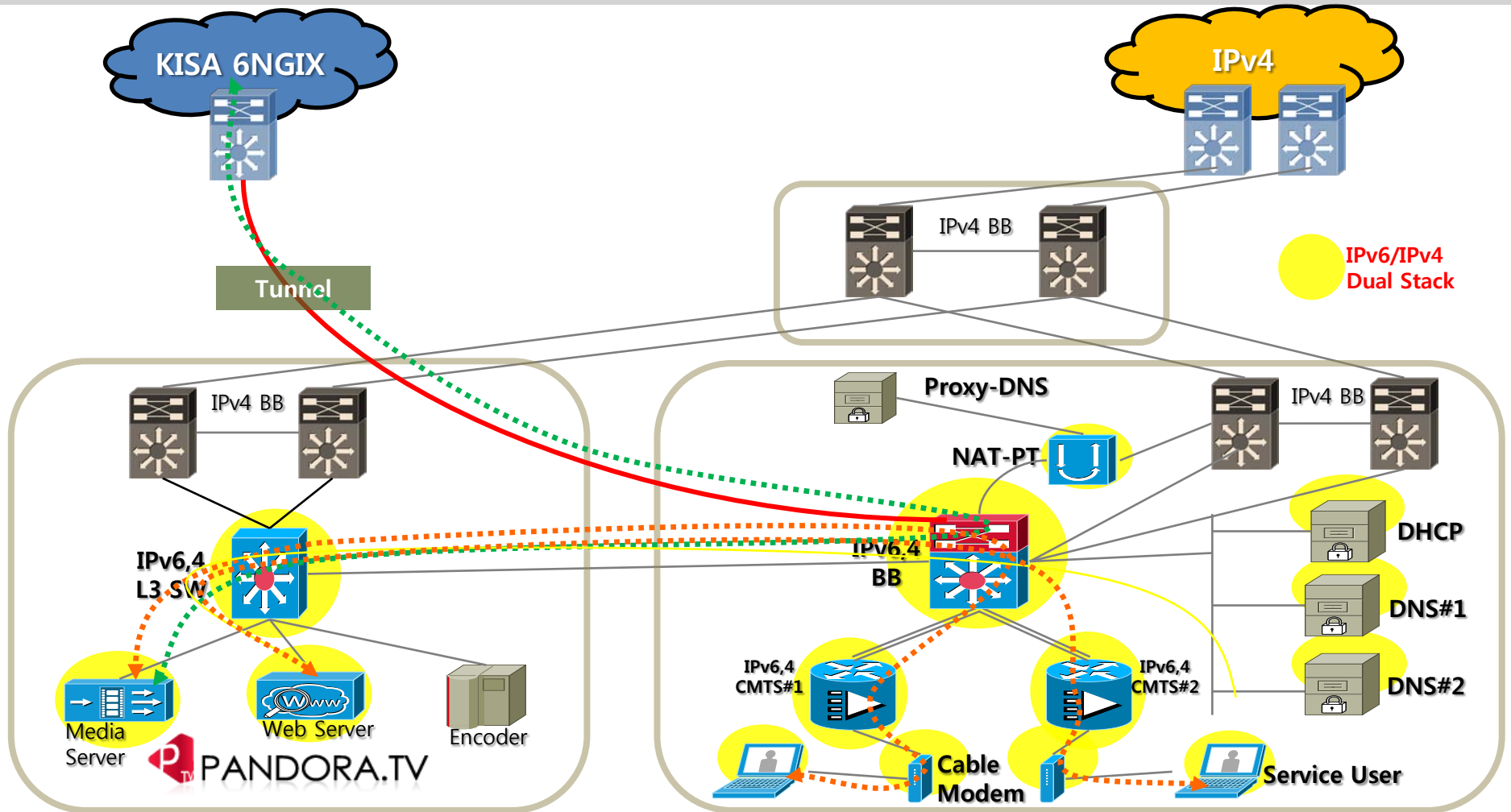


Traffic Flow

- - - IPv6 Traffic - - -  
- - - IPv4 Traffic - - -

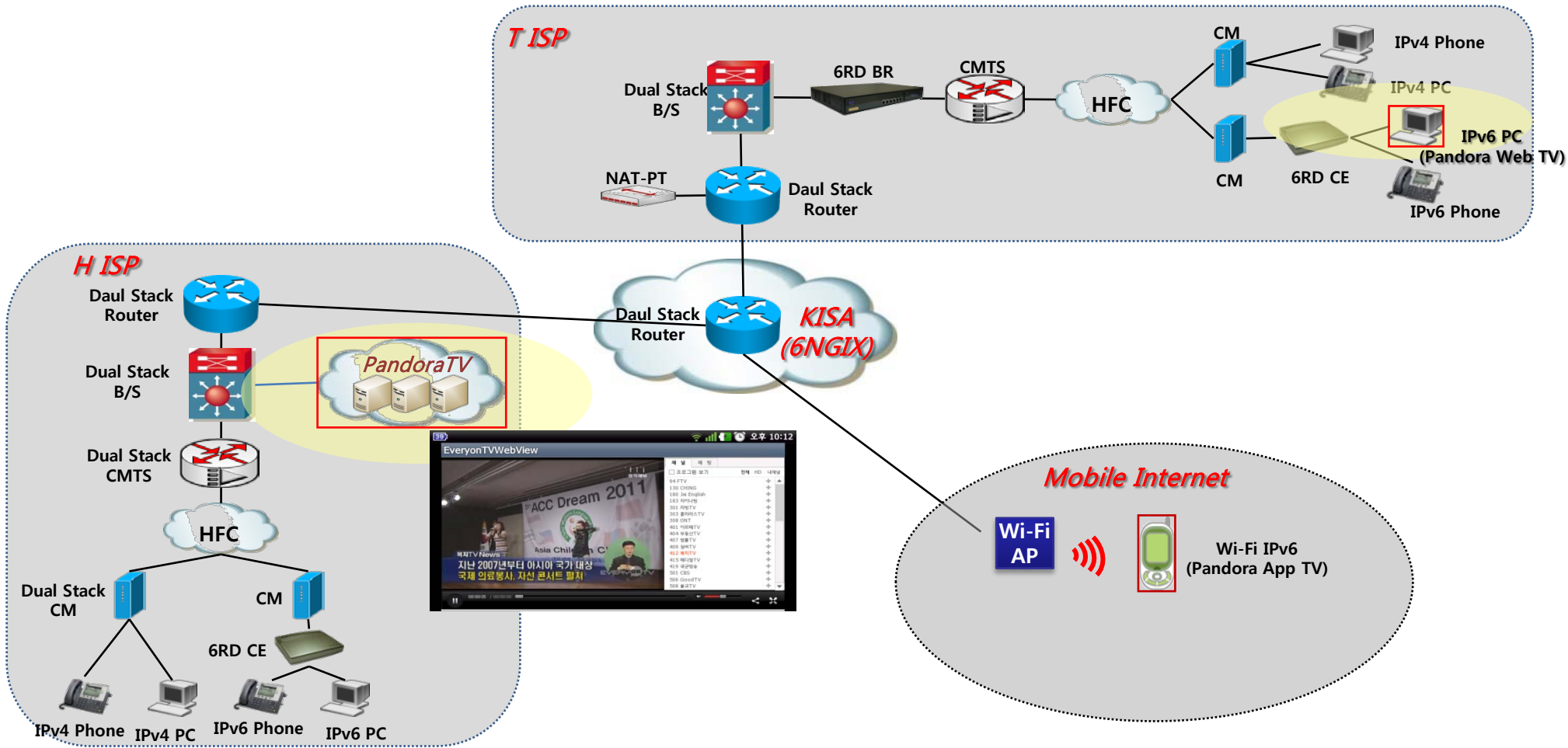
# I. Testing Environment – H ISP

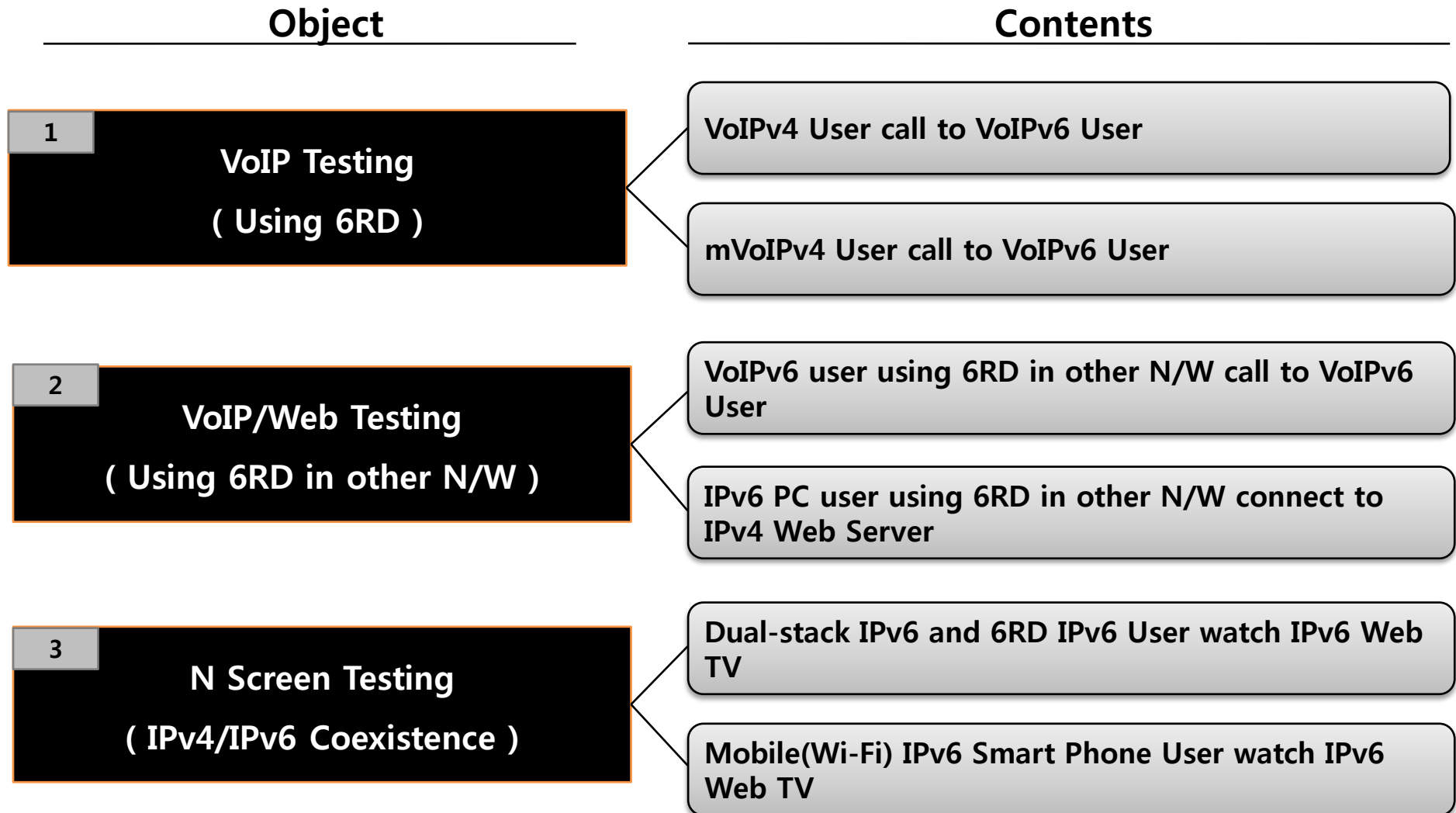
## ◆ Deploying IPv4/IPv6 Dual-Stack



# I. Testing Environment – N Screen

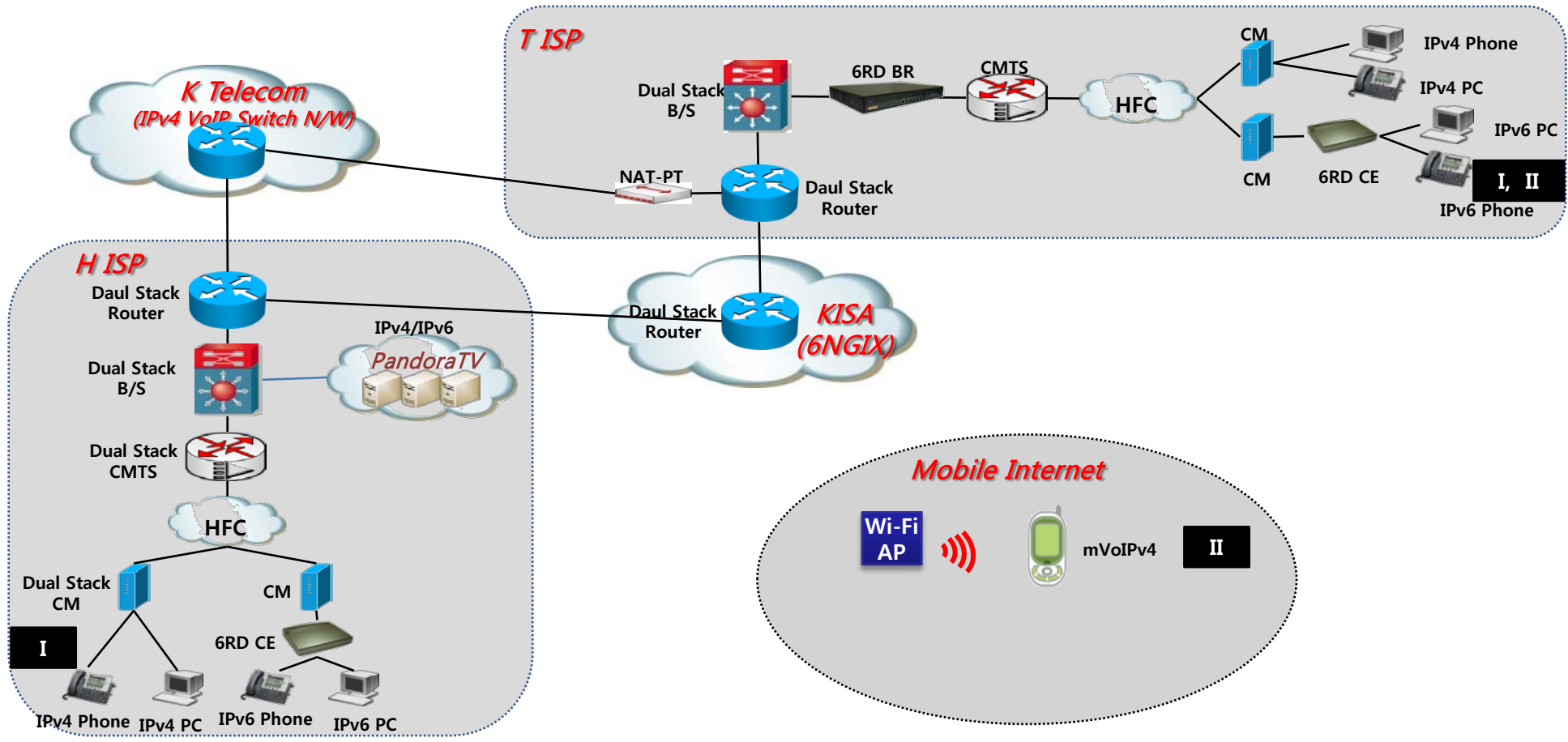
## ◆ Implementing IPv4/IPv6 Web TV Service & App TV Service





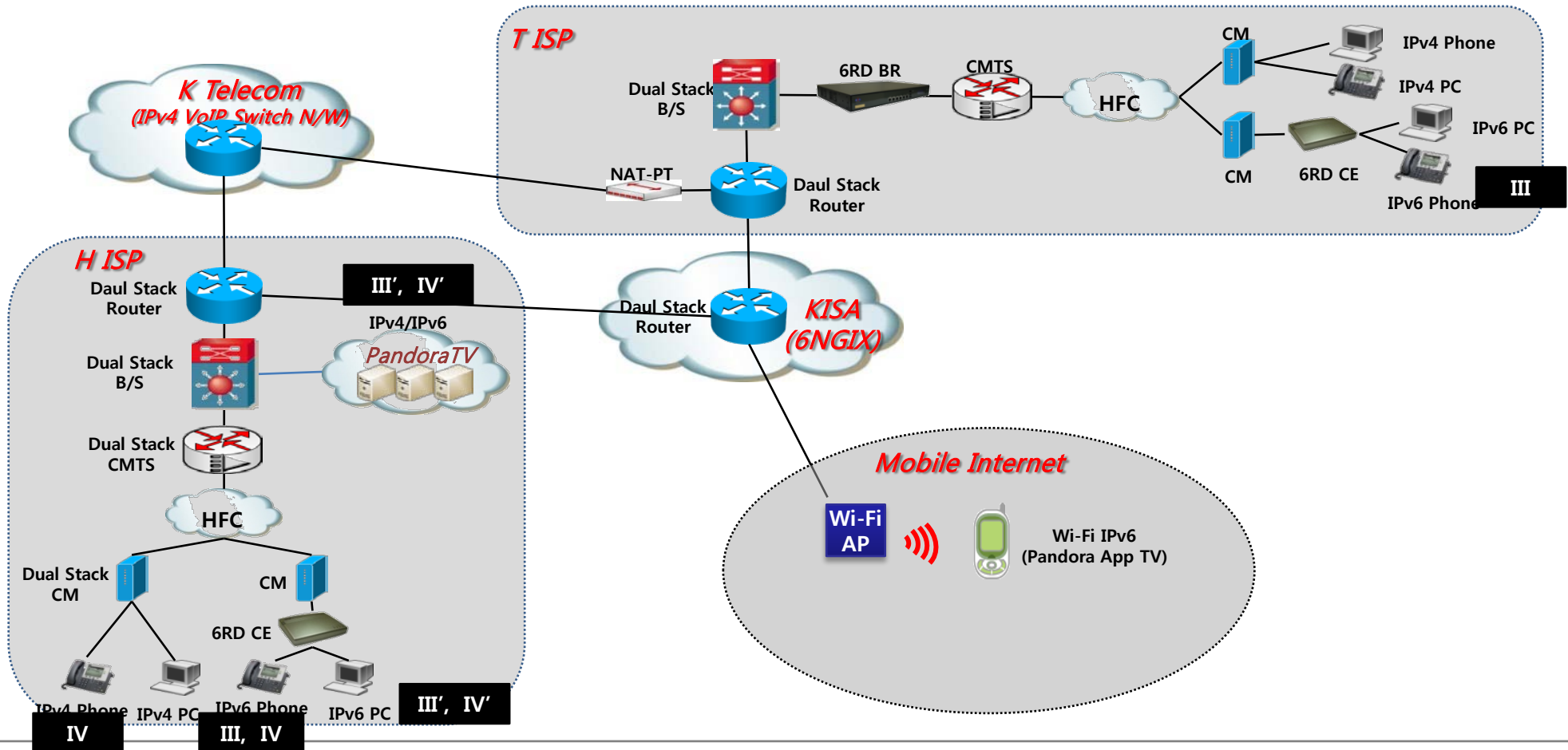
### III. Testing Results(1/3)

- ◆ I: H ISP's VoIPv4 – KCT VoIPv4 switch - T ISP's NAT PT – T ISP's 6RD VoIPv6
- ◆ II: mVoIPv4 – KCT VoIPv4 switch - T ISP's NAT PT – T ISP's 6RD VoIPv6



### III. Testing Results(2/3)

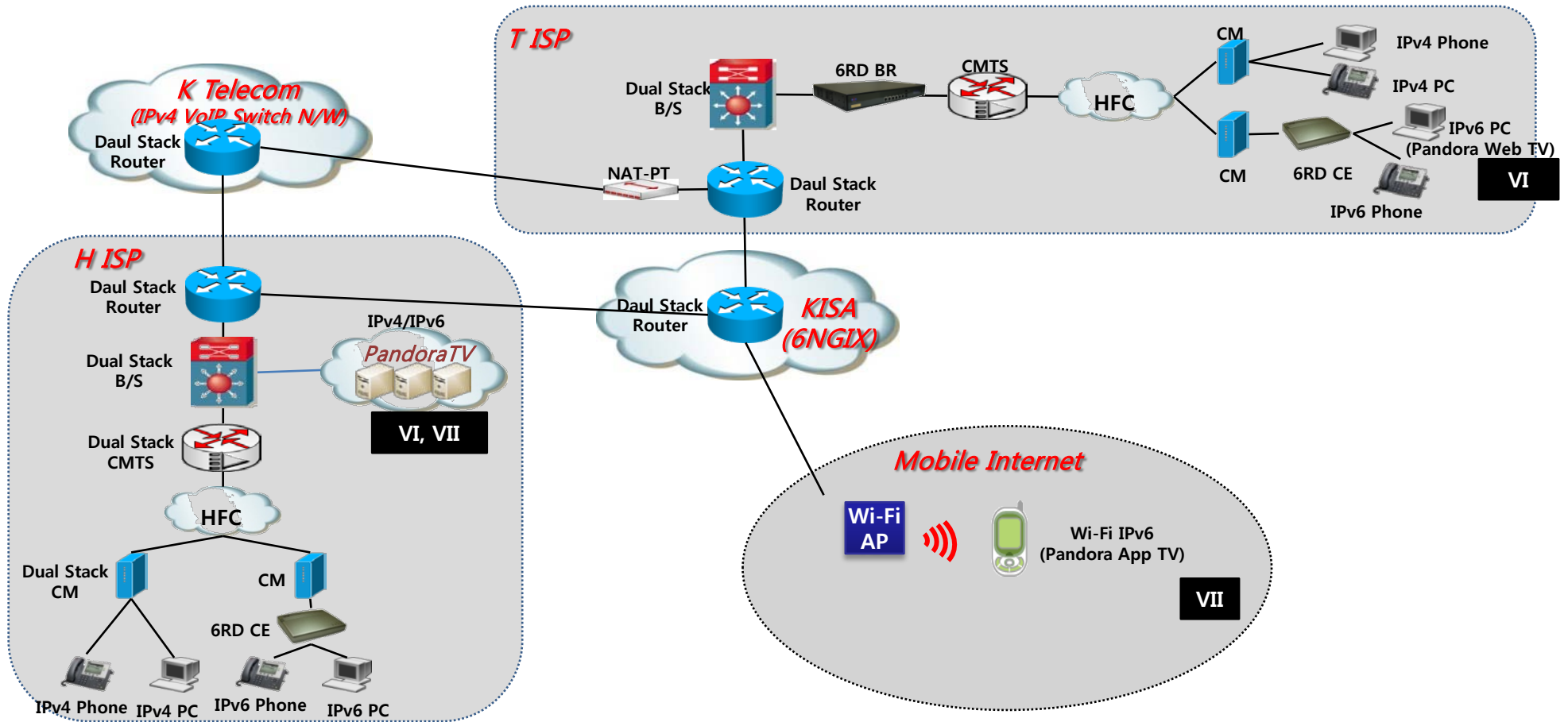
- ◆ III: H ISP's 6RD VoIPv6 – T ISP's 6RD BR & NAT PT- KCT VoIPv6 switch – T ISP's 6RD VoIPv6
- ◆ III': H ISP's 6RD IPv6 PC – T ISP's 6RD BR – KISA 6NGIX – Pandora IPv6 Server
- ◆ IV: H ISP's 6RD VoIPv6 – T ISP's 6RD BR & NAT PT- KCT VoIPv6 switch – H ISP's VoIPv4
- ◆ IV': H ISP's 6RD IPv6 PC – T ISP's 6RD BR – IPv6 Internet – Pandora IPv4 Server





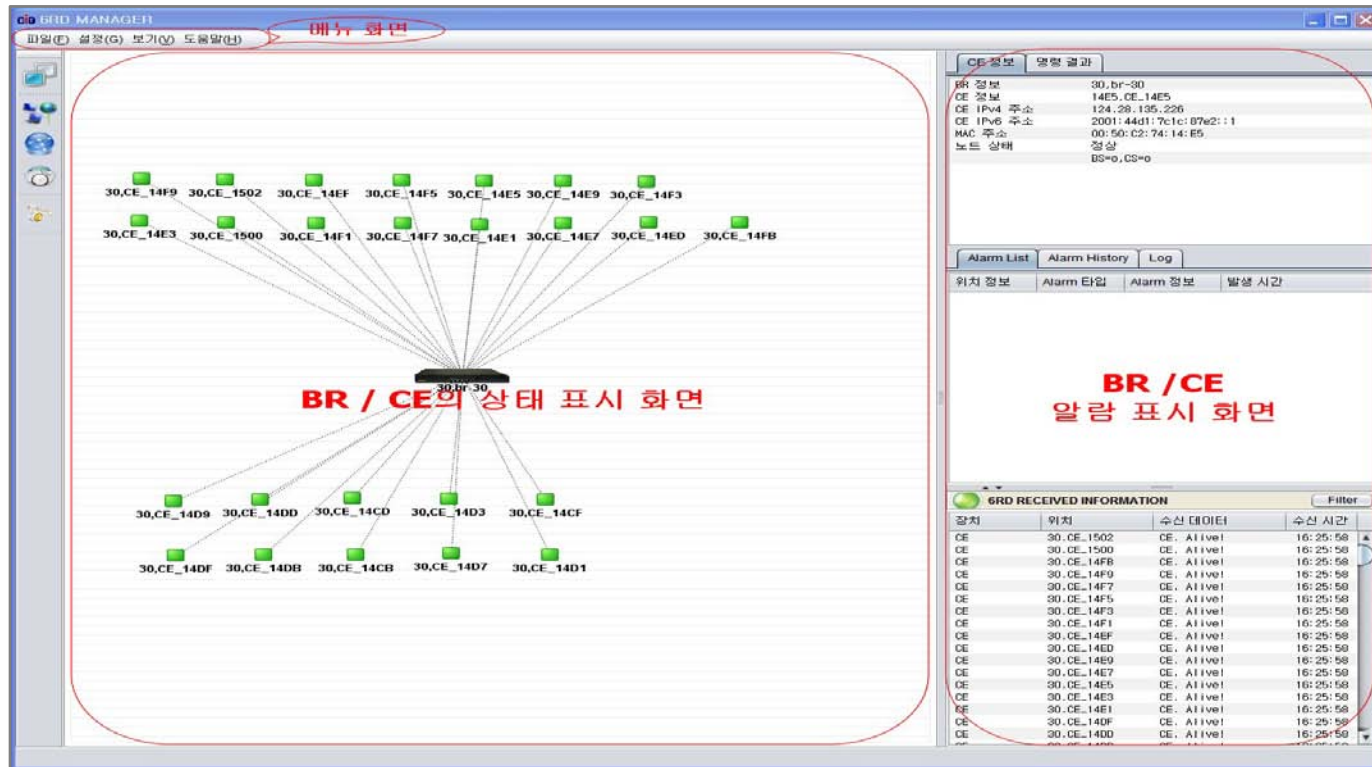
### III. Testing Results(3/3)

- ◆ VI: T ISP's IPv6 PC – KISA 6NGIX – Pandora IPv6 Server(Web TV)
- ◆ VII: IPv6 Smart Phone App – KISA 6NGIX - Pandora IPv6 Server(Web TV)



# IV. After Testing – T ISP(IPv6 Phone Service)

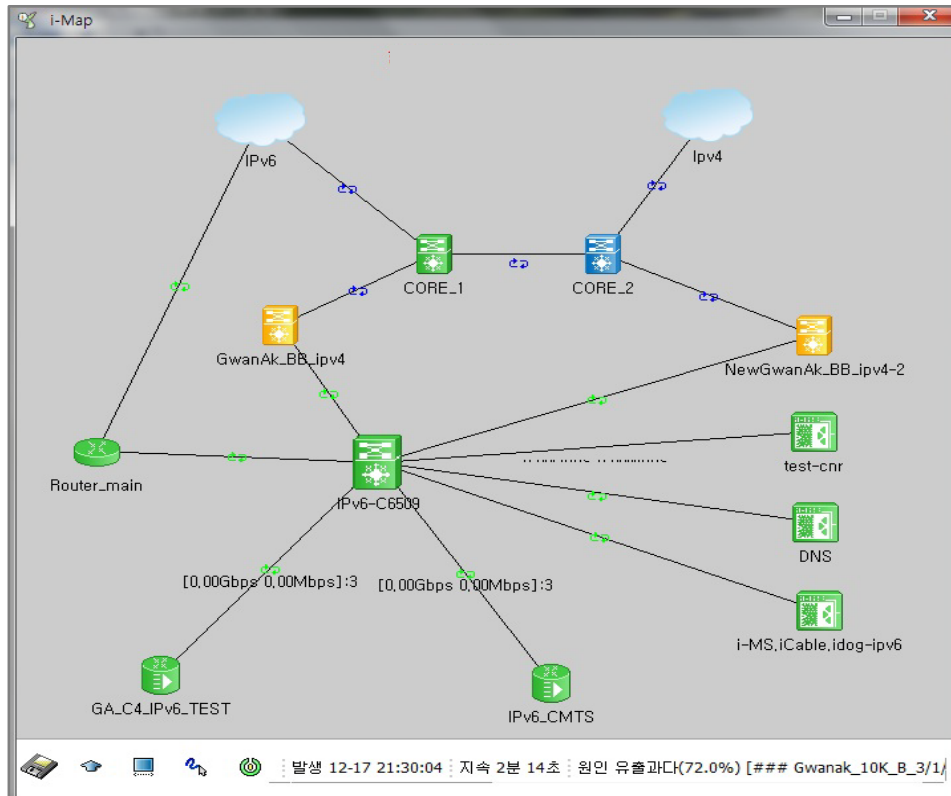
## ◆ Providing IPv6 Phone Service



< NMS Monitor >

# IV. After Testing – H ISP

## ◆ Proving IPv4/IPv6 Dual Subscribe Network Service



케이블모뎀 리스트 <208 건>

MAC IP 전체상태 전체 조건선택 = 검색

C M T S 27.35.54.38-IPv6\_CMTS 20 건 검색셀 SELECT

맥 (MAC) 주소 ▲	IP 주소	인터페이스	RxPwr	SNR	상태	SID	CPE	링크
0005.CA8E.2CE3	10.22.0.61 2001:EA0:3::44C8:50FE:8AFD:1A5D	C5/0/0:0/U	-1.0	-99	🟢	32	1/16	보기
0005.CA8E.488C	10.22.0.166 2001:EA0:3::70ED:9CFC:6688:3E9C	C5/0/0:0/U	-1.0	-99	🟢	27	1/16	보기
0005.CA8E.5240	10.22.0.176 2001:EA0:3::B15E:8A09:6E49:BAE4	C5/0/0:0/U	-1.0	-99	🟢	4	1/16	보기
0005.CA8E.6410	10.22.0.170 2001:EA0:3::CD7E:7223:7A41:396	C5/0/0:0/U	-1.0	-99	🟢	125	1/16	보기
0005.CA96.8B69	10.22.0.174 2001:EA0:3::C45A:10FA:2303:9BD1	C5/0/0:0/U	-1.0	-99	🟢	23	0/16	보기
0005.CAE6.0A2C	10.22.0.171 2001:EA0:3::3418:EF95:9AFA:4DCC	C5/0/0:0/U0	4.5	35	🔴	147	0/16	보기
0005.CAE6.0C80	10.22.0.127 2001:EA0:3::7094:2AF9:9330:7AFF	C5/0/2:0/U1	5.5	36	🟢	1	3/16	보기
0005.CAE6.12EC	10.22.0.173 2001:EA0:3::6888:E69A:18B3:C87D	C5/0/2:0/U1	-1.0	-99	🟢	10	1/16	보기
0005.CAE6.1B64	10.22.0.131 2001:EA0:3::E90D:5740:5CC:C8D5	C5/0/0:0/U1	-1.0	-99	🟢	197	1/16	보기
0005.CAE6.1DC4	10.22.0.38 2001:EA0:3::C08B:59AE:F6E6:DFA1	C5/0/0:0/U1	-1.0	-99	🟢	27	0/16	보기
0015.0920.13B1	10.22.0.243 2001:EA0:3::D1E9:D2D7:A961:D336	C5/0/0:0/U2	-1.0	-99	🟢	43	1/16	보기
0015.0920.13B3	10.22.0.242 2001:EA0:3::9C37:F9A8:400F:2B19	C5/0/0:0/U2	-1.0	-99	🟢	45	0/16	보기

< NMS & SMS >

# IV. After Testing – N Screen(IPv6 Web/App TV Service)

## ◆ Providing IPv6 Web/App TV Service



**Thank You**

---