

# Home Network and Its Related Service

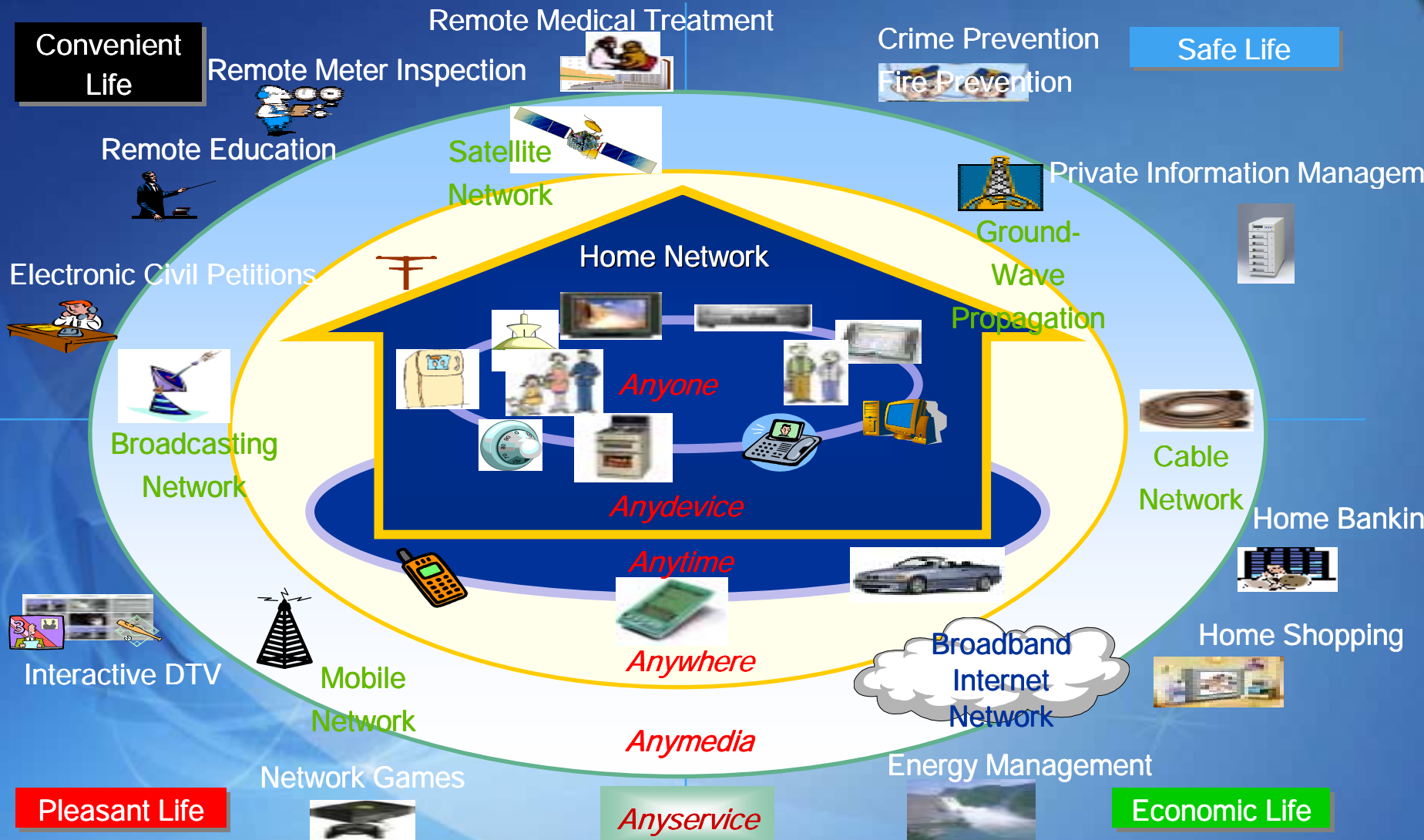
2005.2.21

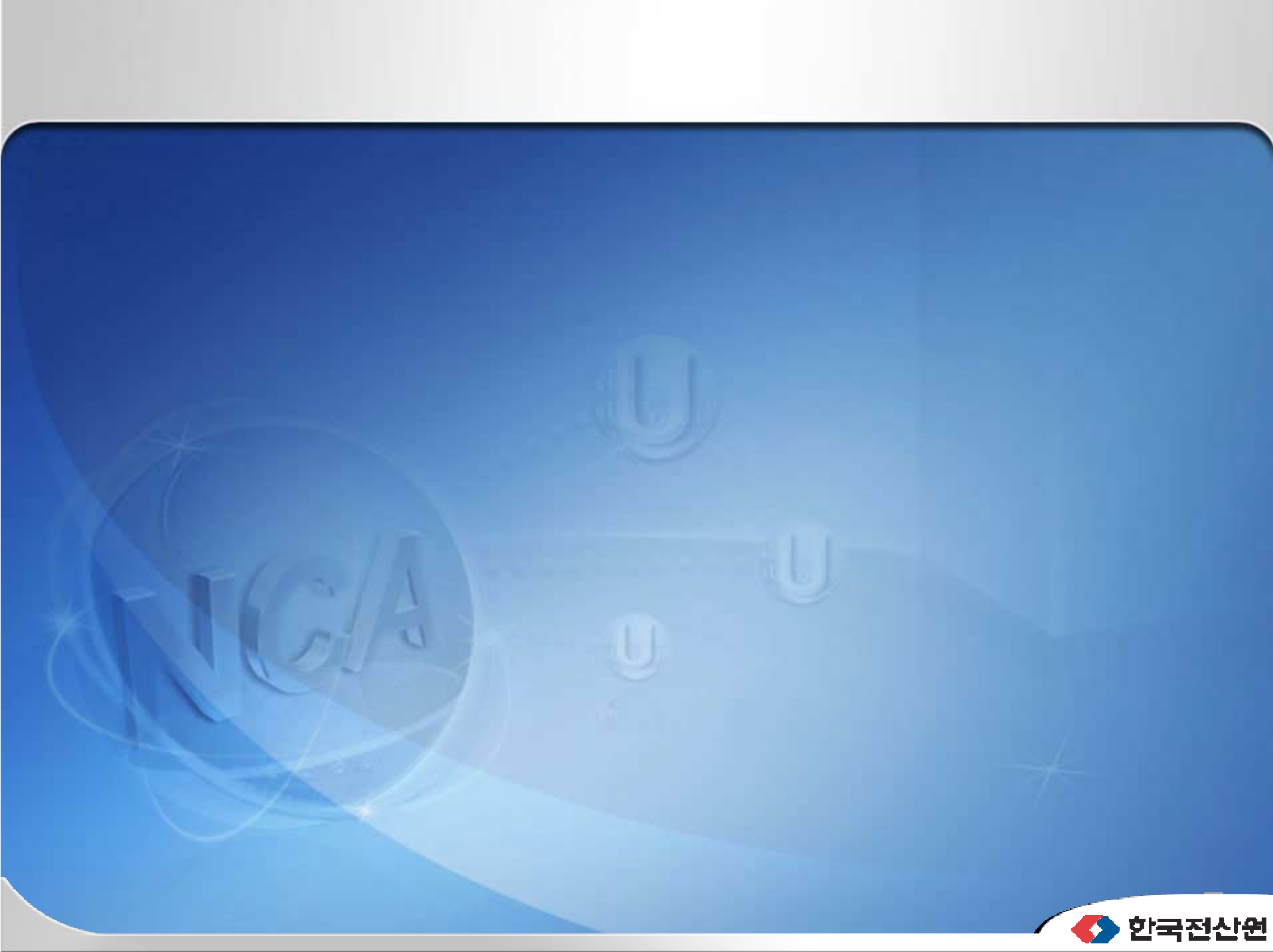
Lee, Yeong-Ro

Email: [lyr@nca.or.kr](mailto:lyr@nca.or.kr)

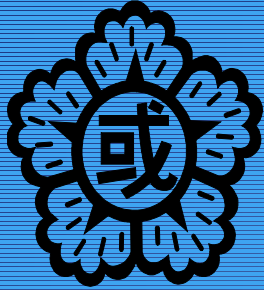
# Home Network Overview

# Concept of Digital Home





# Digital Home Realization



Digital@Government

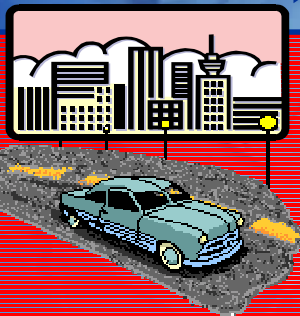


Digital@Office



Digital@School

Service  
Connection

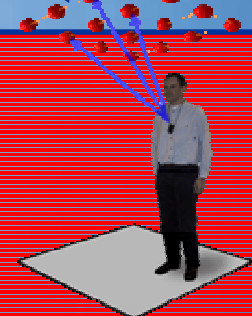


Digital@Vehicle



Digital@Home

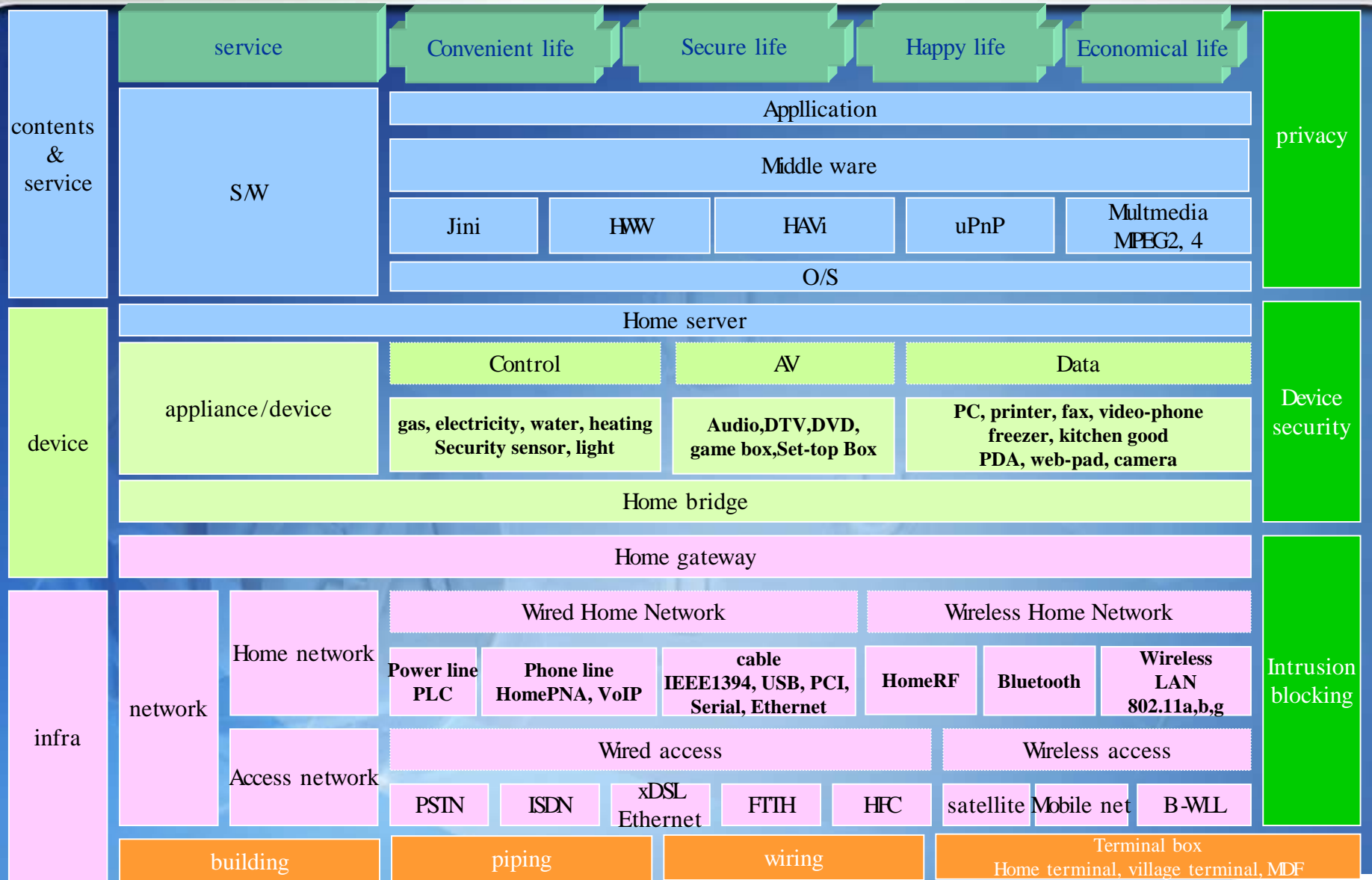
Service  
Connection



Digital@Street

Digital Home is content provider & consumer

# Home Network Component





# Major Services on Home Network

Service	Summary	Service Type
Home Automation	Automatic and remote management of various convenient facilities at home	<ul style="list-style-type: none"> <li>◆ Home appliances control/ lighting devices control</li> <li>◆ Digital meter inspection/ energy management</li> <li>◆ Automated entrance/exit control</li> </ul>
A/V Service	Digital audio/video broadcasting and various extra services	<ul style="list-style-type: none"> <li>◆ Digital satellite broadcasting</li> <li>◆ VOD/AOD/GOD services</li> </ul>
Data Service	Information providing services such as news, weather, fortune telling, etc., and transaction processing services such as T-Commerce, etc.	<ul style="list-style-type: none"> <li>◆ SMS/MMS</li> <li>◆ Messenger</li> <li>◆ News/Weather/Fortune Telling/ T- commerce</li> </ul>
Application Service	Remote medical consulting with a doctor and health examination/ Health management services	<ul style="list-style-type: none"> <li>◆ Remote medical consulting</li> <li>◆ Health examination/ Health management</li> </ul>

# Major Services on Home Network

Service	Summary	Service Type
Internet Service	Online and TV services on the Internet by using broadband Internet network	<ul style="list-style-type: none"><li>◆ Broadband Internet services</li><li>◆ Internet TV</li></ul>
Home Security System	Safety services through various sensors (UV detectors, front door magnetic detectors, gas detectors)	<ul style="list-style-type: none"><li>◆ Front door detection/ Fire detection</li><li>◆ Gas/ short-circuit detection</li><li>◆ Emergency notice/surrounding areas detection</li></ul>
Public Service	Public services through connection between the national information network and the administration network	<ul style="list-style-type: none"><li>◆ Internet administrative services</li><li>◆ T-Government</li><li>◆ Roads/transportation/location information services</li></ul>



# Home Network Direction

## Location-based Digital Home Service

2003

integration

## Situation Recognizing Digital Home Service

2005

2007

DTV integrated Home Server

## Intelligent Digital Home Service

2012

Mobile Home Server

Sensitive Home Server

Set-top-box integrated Home Server  
Residential Gateway

Home Appliance integrated Home Server

UW

Sensor Network

RFID

Intelligence

High-Resolution Video Service

Home Appliance Wireless Service

Intelligent Home Network

Ubiquitous Home Service

Information Home Appliances

DTV

Tablet PC

Home Gateway

Game Machine

Home Server

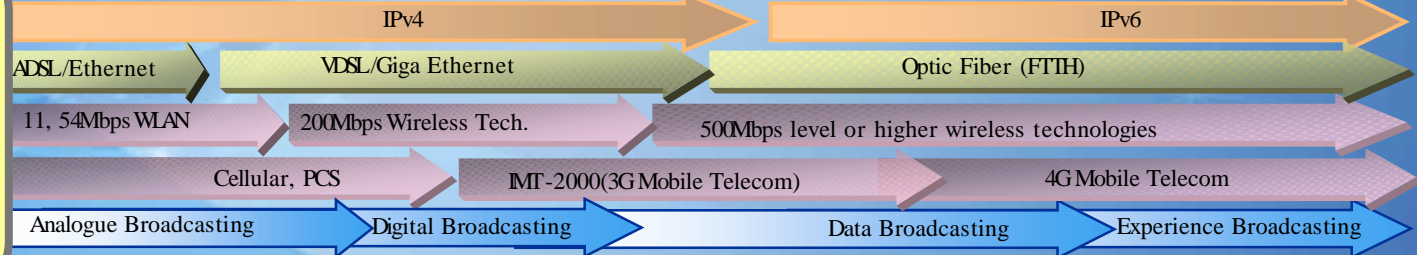
Infrastructure

IP

Wired

Wireless

Broadcasting



# Home Network Trial Projects

# Industry Dynamics

“Triple Play Service”

**Telco(Mobile)**

Telephone Svc.

Telecom area

Mobile Internet svc.

**CATV**

Broadcasting service

Broadcasting area

Broadband Internet service

Telecom area

**Digital Home**

Telephone service (VoIP)

Broadcasting Svc.

Broadcasting area (svc. Not avail.)

**Construction**

Broadband Internet

Telephone(VoIP)

HA-based digital home svc.

**Telco(wired)**

Broadband Internet

Telephone Svc.

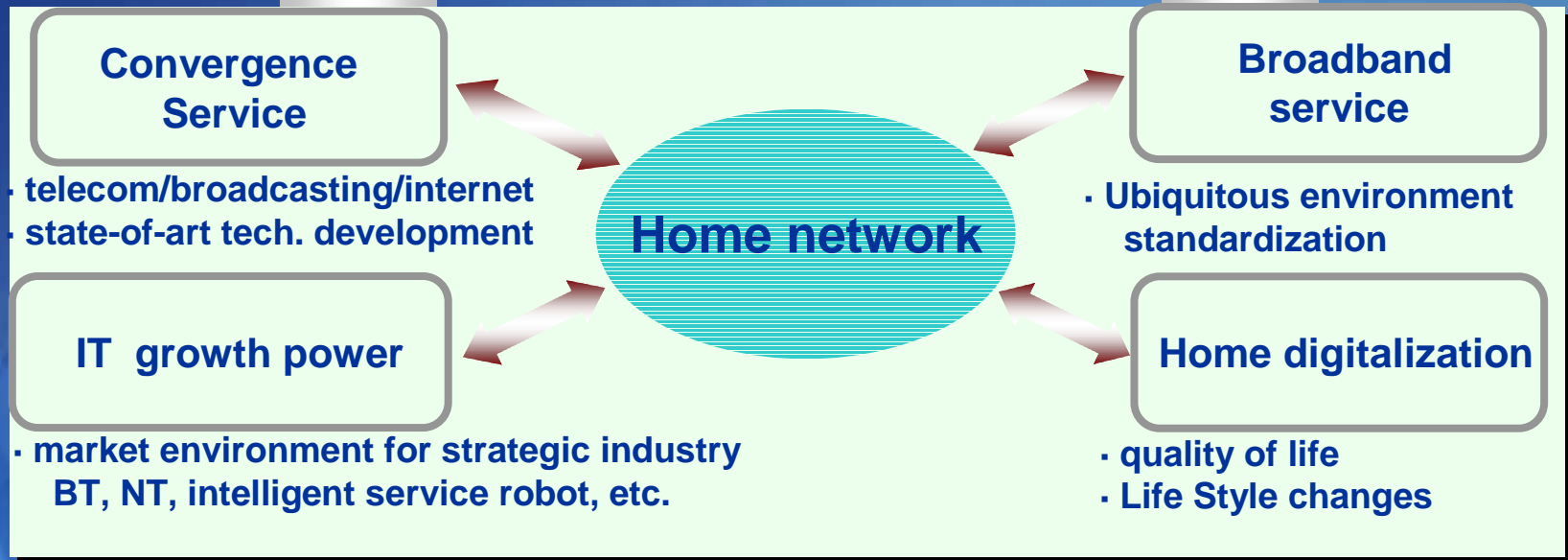
Telecom area

# Why Home Network is Important

- Home is the source of New Info-comm services
  - Mobile, Home, Office(Work)
  - Many info-comm devices at the Home
  - New service chances from Home
- Home Network ( Digital Home) has 'Integrated' feature itself, once introduced then huge impacts on industries
  - Construction, Home Appliances, Energy, Telecom, Broadcasting(Cable), Security, etc
- Broadband Home Access is one of the BcN's Goal
  - Quality Guaranteed Service can change people's life style in the Future

# Vision

## 10M households Home Network diffusion



## Trial project cooperation with 2 consortium

Service model development	Home network emblem
Broadband access(wired, wireless)	Long-term tech. development
Device/service Standardization	Consolidate legislation

# Goal & How

## Goal

- Service model development, market promotion
- Verify Compatibility and interoperation among various types of devices, vendors, services
- Make people realize “home network” is easy to use and useful as commodities

## How

- Each consortium consists of various industry players
  - participation of major players from a variety of industries such as construction, home appliance, telecom, broadcasting companies
- Matching fund b/w Gov. : private consortium (1 : 2+)
- Results of trial projects transferred to Standardization activities

# Plan by Stage

## ● 1<sup>st</sup> stage : 2003. 7 ~ 2004. 12

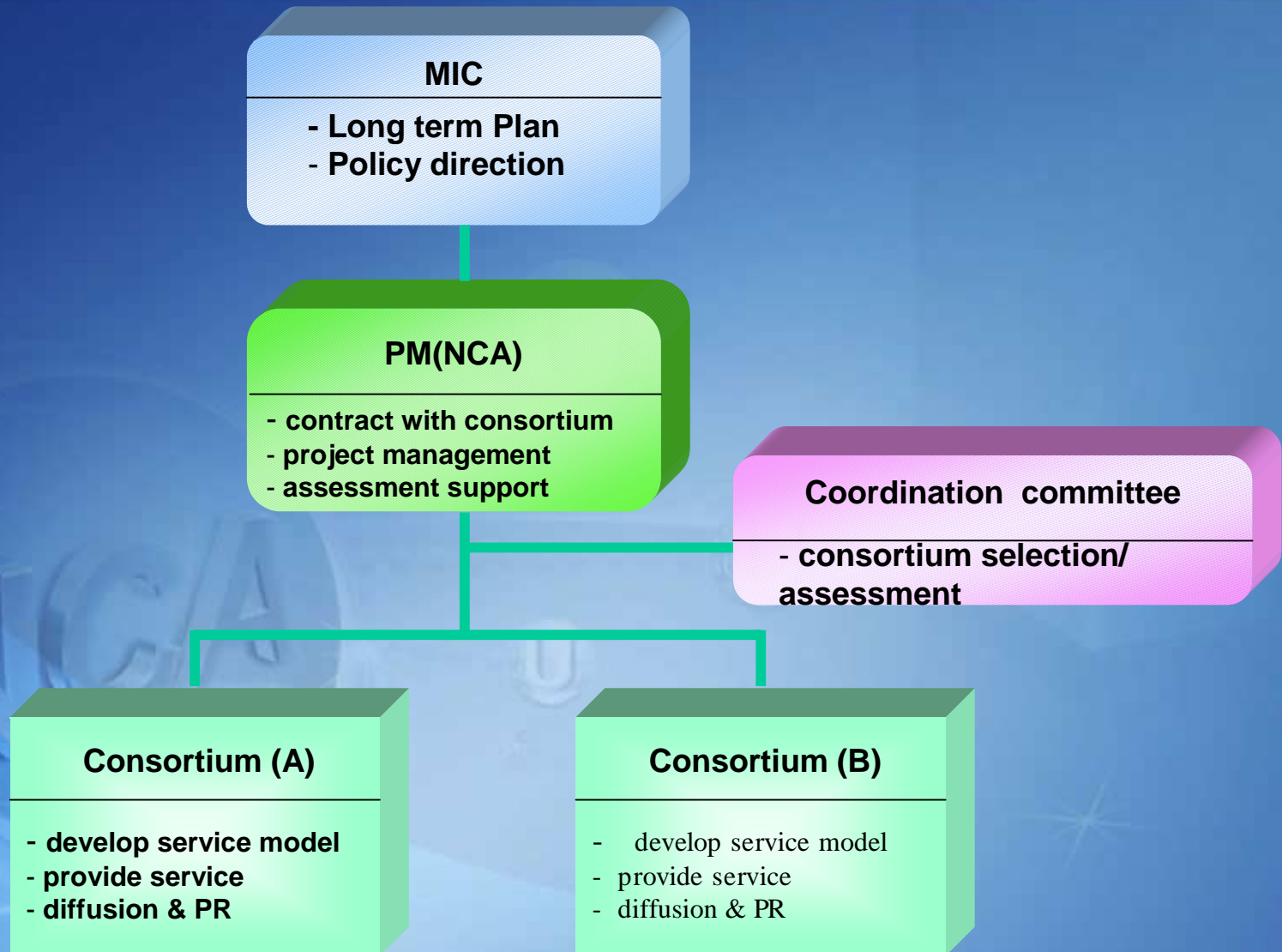
- Service model development (home network enabler)
  - . Based on existing IT infra, apply existing tech.
  - . Web service on Various non-PC devices
- find compatibility issues & how-to-solve

## ● 2<sup>nd</sup> stage : 2005. 1 ~ 2007. 12

- Enhanced Service model development
  - . Based on BcN, Ubiquitous & IPv6
  - . User friendly services with Intelligence, voice•video recognition
- apply & verify compatibility solution from 1<sup>st</sup> stage



# Roles



# 1<sup>st</sup> Stage Trial Project

## Government driven trial project to find Killer Application

Region

5 major provinces including capital city area

users

1,300 homes (Apartment complex, private house)

Providers

2 consortium (KT, SKT) 80 participating companies

funding

32.5Million (Government : 4.5M, Consortium : 28M)

service

45 services (HA, Home security, Interactive DTV, Infotainment)

# Consortium Status

Category	K T	S K T
Funding	15M (Government 2M)	17M (Government 2M)
Partners	42 companies & organizations	37 companies & organizations
Object	700 homes	600 homes
Region	Seoul area(8 sites), Daegu(2 sites), Gwangju(2 sites)	Seoul area(5 sites), Daejeon(1 sites), Busan(1 sites)
Service	21 services	24 services

# Partners & Roles

Category	K T	S K T	Roles
Telecom	KT, KTF	SKT, Hanaro telecom	Network & Platform
Broadcasting	KBS, MBC, Skylife	SBS, CJ Cable Net	Contents, Convergence technology
Construction	Samsung, Hyundai Construction	Daewoo, Lotte, LG Construction	Site, home infra building
Appliance	Samsung Electronics, Linnai	LG Electornics, Daewoo Electronics	Appliance & device compatibility
Solution	Komax, S-one, Hyundai Home shopping	SKC&C, Bit Computer	service, technology development & deploy
Local Gov.	Daegu city office, Gwangju city office	Busan city office, KU hospital	PR, Administrational support, public service support

# Trial Project Services

## KT Consortium

interactive  
DTV  
service

T-Commerce

T-Poll

T-Edu.

T-Mobile

T-Gov..

ESG

Smart Card

Local information, domestic  
information management

Customized Information

Customized A/V

Network games

IP-multicast Broadcasting

Infotainment  
Service

## SKT Consortium

Remote  
control

Lighting, temperature,  
curtains

IHA

Intelligent robot automatic control

Remote meter  
inspection

Electricity, gas, water supply

Entertainment

HDTV, network game, personal  
broadcasting

VOD

Movies, EOD, COD

Home safety

Security, remote monitoring,  
officers dispatch

Remote  
medicine

Health management

Protection

Pets, children, the elderly, etc.

Fire prevention

Short-circuit, water leakage and  
gas leakage deterrence

# Trial Project Services

## KT Consortium

**Medicine/  
Health**

**Health exam/ health  
management, remote medical  
consulting**

**Home  
Automation**

**Living devices control,  
information home appliances,  
visitors**

**Energy management, remote  
meter inspection**

**Home  
Security**

**Home viewer/Home  
monitoring**

**Intrusion detection and  
officers dispatch/ fire  
prevention and officers  
dispatch**

## SKT Consortium

**Communicati  
ons and  
messaging**

**VoIP, wired/wireless  
connected video conference**

**SMS, MMS**

**Information  
Providing**

**Local information,  
customized information,  
remote education**

**Remote e-  
commerce**

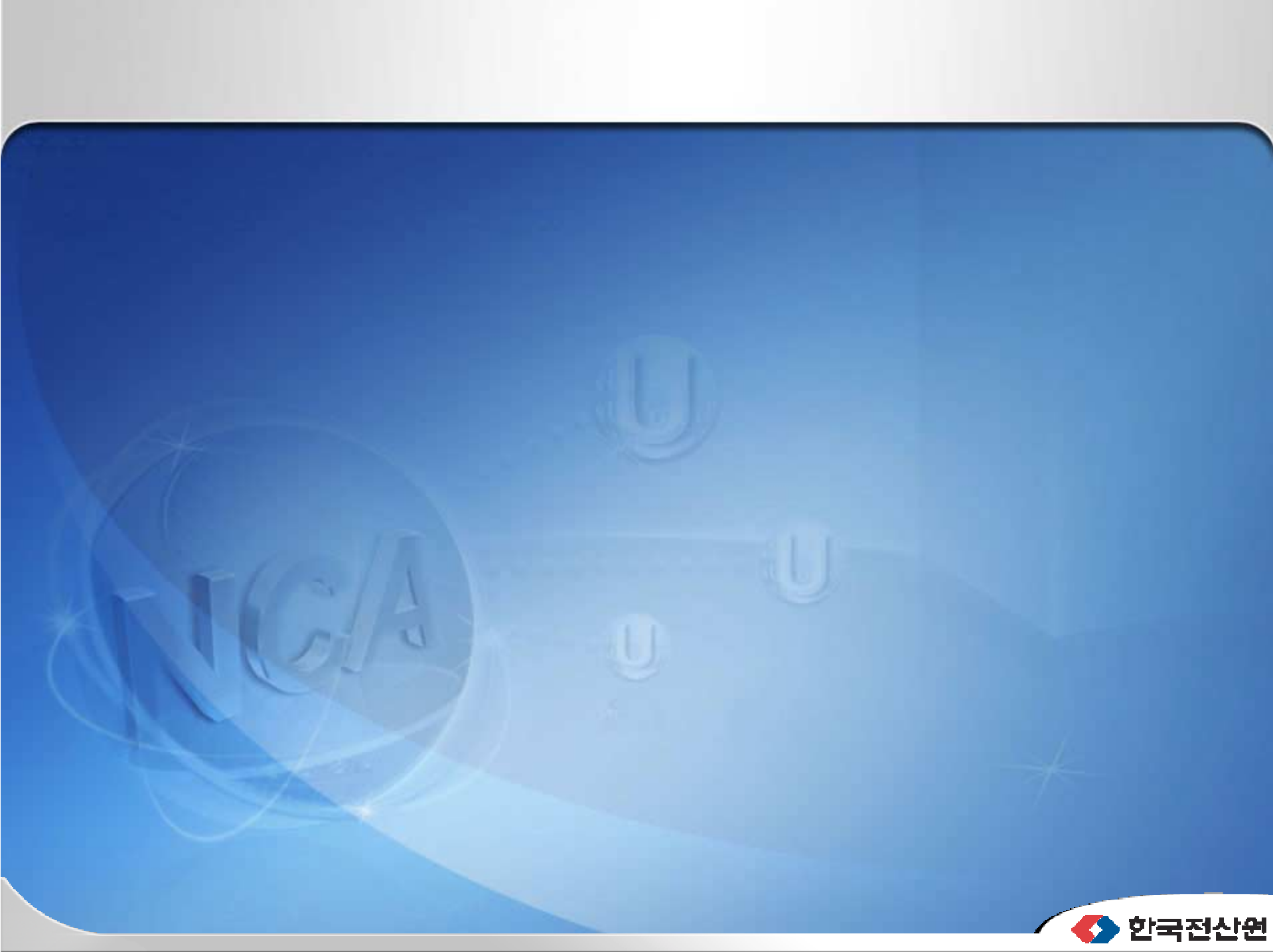
**T-Commerce, T-banking, T-  
stock**

**Telematics**

**Bus schedules, vehicle  
security, vehicle anti-theft**

**Public  
services**

**e-Government services**





# Device Location in Home



## Service UI (example)

- ❑ Interactive DTV service : ACAP data broadcasting standard

# T-Commerce



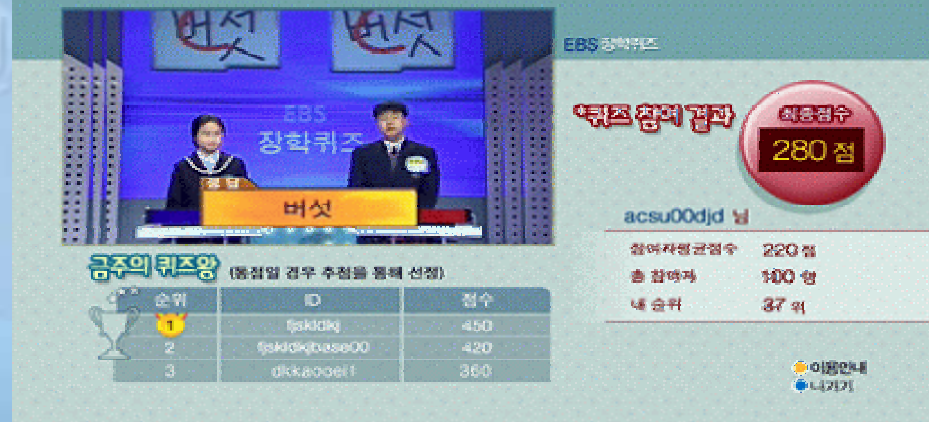
# T-Mobile



# T-Poll



# T-Education



# Appliance (example)

**Pet care**



**Digital door lock**



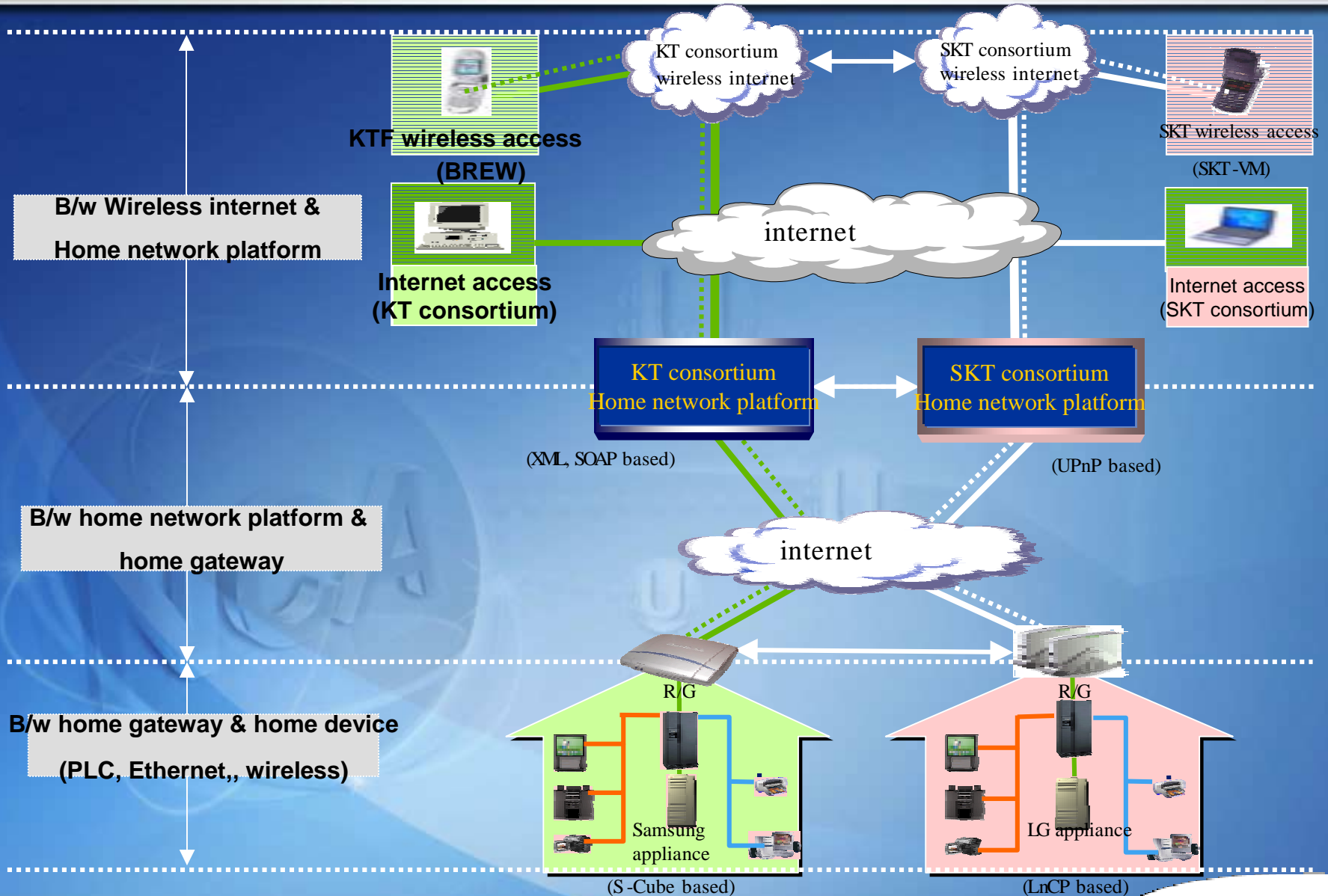
**Gas control**



**Tele-medicine**



# Compatibility Issue





# Expected Result

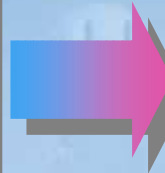
Home : Pleasant & Convenient Info. Life Space

Individual : Real Digital Life

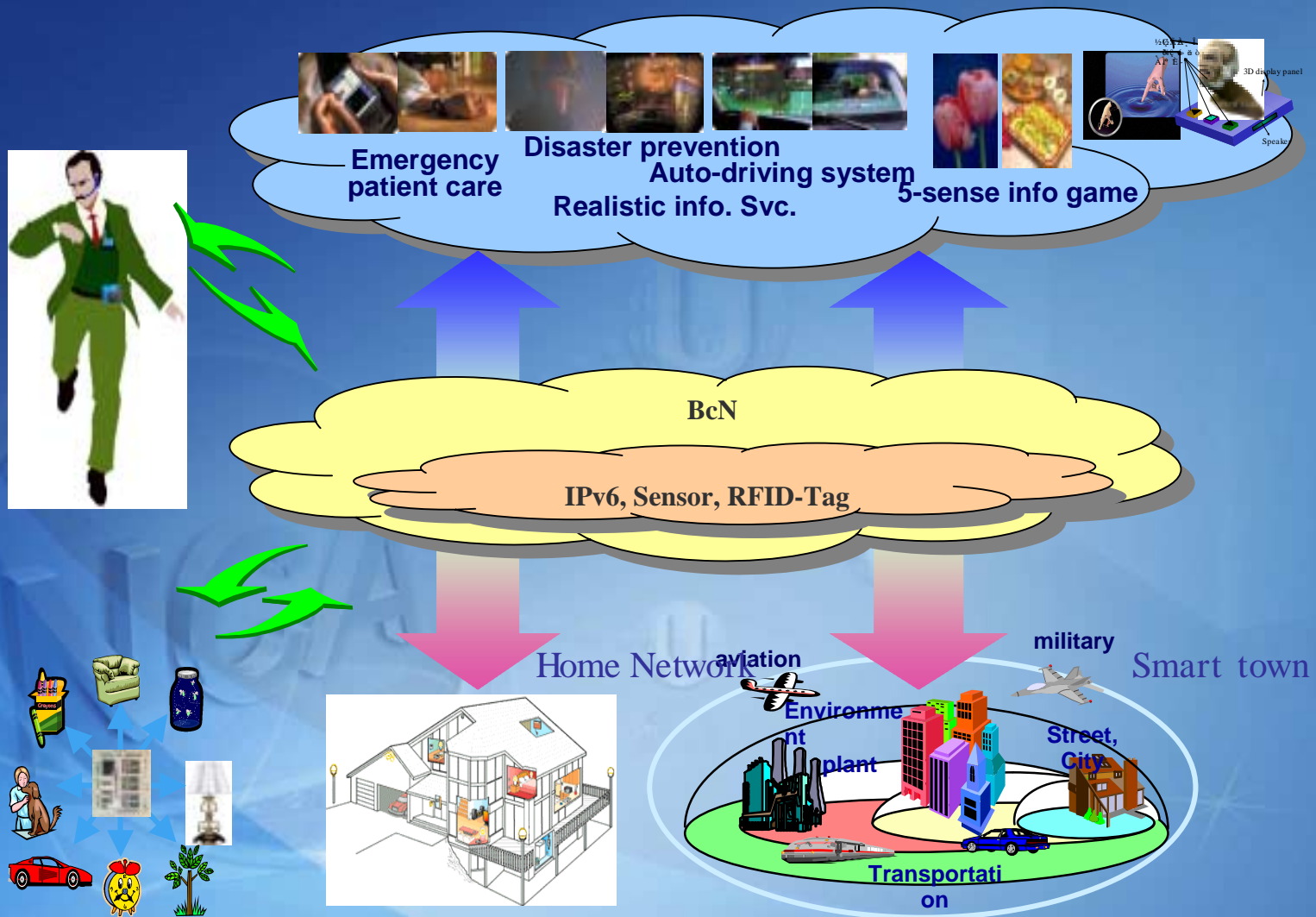
*Today*

**Home Network**

*Tomorrow*



# Expected Result





Thank You!